



SEPTEMBER QUARTER 2006

8635.0

TOURIST ACCOMMODATION AUSTRALIA

EMBARGO: 11.30AM (CANBERRA TIME) TUES 9 JAN 2007

CONTENTS

	<i>page</i>
Notes	2
Summary of findings	3
List of tables	8

ADDITIONAL INFORMATION

Explanatory notes	55
Glossary	60

INQUIRIES

For further information about these and related statistics, contact the National Information and Referral Service on 1300 135 070.

NOTES

FORTHCOMING ISSUES

ISSUE (Quarter)

RELEASE DATE

December 2006

30 March 2007

March 2007

29 June 2007

.....

ABOUT THIS PUBLICATION

This publication presents results from the September quarter 2006 Survey of Tourist Accommodation (STA) for the following categories of establishments:

- licensed hotels and resorts with facilities and 5 or more rooms
- motels, private hotels and guest houses with facilities and 5 or more rooms
- serviced apartments with 5 or more units
- caravan parks with 40 or more powered sites
- holiday flats, units and houses of letting entities with 15 or more rooms or units
- visitor hostels with 25 or more bed spaces.

.....

ABBREVIATIONS

'000	thousand
\$'000	thousand dollars
AAA	Australian Automobile Association
ABS	Australian Bureau of Statistics
ACT	Australian Capital Territory
ASGC	Australian Standard Geographical Classification
cat. no.	Catalogue number
GST	goods and services tax
no.	number
NSW	New South Wales
NT	Northern Territory
qtr	quarter
Qld	Queensland
SA	South Australia
SLA	statistical local area
STA	Survey of Tourist Accommodation
Tas.	Tasmania
Vic.	Victoria
WA	Western Australia

Susan Linacre

Acting Australian Statistician

SUMMARY OF FINDINGS

SEASONALLY ADJUSTED AND TREND

*Hotels, motels and
serviced apartments with
15 or more rooms*

KEY FIGURES, Seasonally adjusted and trend—Australia

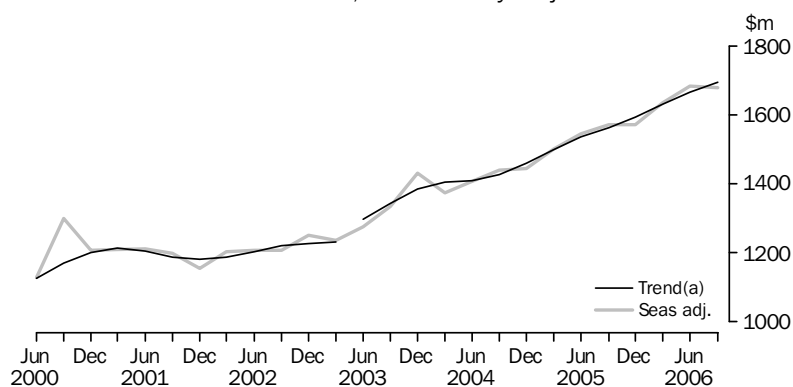
	Sep Qtr 05	Jun Qtr 06	Sep Qtr 06
Seasonally Adjusted			
Takings from accommodation ('000)	1 570 059	1 684 072	1 679 882
Room occupancy rate (%)	62.8	64.6	63.5
Trend			
Takings from accommodation ('000)	1 563 080	1 666 336	1 695 816
Room occupancy rate (%)	63.0	64.1	64.2

ACCOMMODATION TAKINGS

The trend estimate of the total accommodation takings for hotels, motels and serviced apartments with 15 or more rooms continued to increase. In September quarter 2006, it increased by 1.7% to \$1,695.8 million compared with June quarter 2006.

The seasonally adjusted estimate of the total accommodation takings fell by 0.2% to \$1,679.9 million from June quarter 2006 to September quarter 2006.

ACCOMMODATION TAKINGS, Seasonally adjusted and trend—Australia



(a) Break in time series between the March and June quarters 2003. See Explanatory Notes.

ROOM OCCUPANCY RATE

The trend estimate of the room occupancy rate for hotels, motels and serviced apartments with 15 or more rooms for the September quarter 2006 (64.2%) increased by 0.1 percentage points over the June quarter 2006.

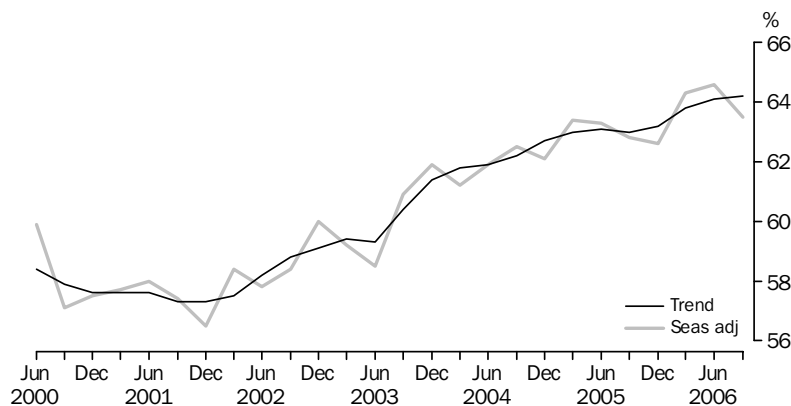
SUMMARY OF FINDINGS *continued*

Hotels, motels and serviced apartments with 15 or more rooms continued

ROOM OCCUPANCY RATE *continued*

The seasonally adjusted estimate of the room occupancy rate decreased by 1.1 percentage points to 63.5% from June quarter 2006 to September quarter 2006.

ROOM OCCUPANCY RATE(a), Seasonally adjusted and trend—Australia



(a) Room occupancy rates are not subject to a break in series.

Seasonally adjusted and trend data are not yet available for hotels, motels and serviced apartments with 5 to 14 rooms or 5 or more rooms.

ORIGINAL

Hotels, motels and serviced apartments

The original estimates are impacted by seasonal variations and irregular or non-seasonal influences. Comparisons between quarters should be made with caution.

KEY FIGURES, Original—Australia

	June Qtr 2006	September Qtr 2006
Hotels, motels and serviced apartments with 5 to 14 rooms		
Rooms (no.)	18 701	18 609
Room nights occupied ('000)	739.7	758.3
Room occupancy rate (%)	43.9	44.4
Takings from accommodation (\$'000)	64 684	69 022
Average takings per room night occupied (\$)	87.5	91.0
Hotels, motels and serviced apartments with 15 or more rooms		
Rooms (no.)	213 035	213 768
Room nights occupied ('000)	11 748.7	12 829.8
Room occupancy rate (%)	60.9	65.3
Takings from accommodation (\$'000)	1 526 511	1 740 492
Average takings per room night occupied (\$)	129.9	135.7
Hotels, motels and serviced apartments with 5 or more rooms		
Rooms (no.)	231 736	232 377
Room nights occupied ('000)	12 488.3	13 588.1
Room occupancy rate (%)	59.5	63.7
Takings from accommodation (\$'000)	1 591 196	1 809 514
Average takings per room night occupied (\$)	127.4	133.2

SUMMARY OF FINDINGS *continued*

Hotels, motels and serviced apartments continued

ACCOMMODATION TAKINGS

In September quarter 2006, accommodation takings for hotels, motels and serviced apartments with 5 or more rooms were \$1,809.5 million. The average takings per room night occupied for these establishments were \$133.17.

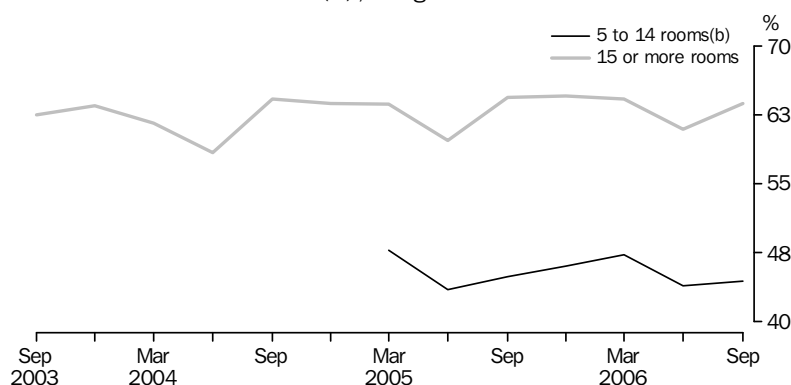
Accommodation takings for hotels, motels and serviced apartments with 15 or more rooms for September quarter were \$1,740.5 million, at an average of \$135.66 per room night occupied. For establishments with 5 to 14 rooms, accommodation takings were \$69.0 million, at an average of \$91.02 per room night occupied.

The contributions to accommodation takings in September quarter 2006 for hotels, motels and serviced apartments with 5 or more rooms were highest in New South Wales (\$574.6 million) and Queensland (\$524.9 million).

ROOM OCCUPANCY RATE

The room occupancy rate for hotels, motels and serviced apartments with 5 or more rooms was 63.7% in September quarter 2006.

ROOM OCCUPANCY RATE (a), Original—Australia



(a) Room occupancy rates are not subject to a break in series.

(b) These establishments were included in the survey from March quarter 2005 onwards.

For hotels, motels and serviced apartments with 15 or more rooms, the room occupancy rate was 65.3%, while for 5 to 14 room hotels, motels and serviced apartments, the room occupancy rate was 44.4%.

ROOM NIGHTS OCCUPIED

Total room nights occupied were 13.6 million in September quarter 2006 for hotels, motels and serviced apartments with 5 or more rooms. Room nights occupied were highest in both New South Wales and Queensland (4.1 million).

For hotels, motels and serviced apartments with 15 or more rooms, room nights occupied were 12.8 million in September quarter 2006, while for establishments with 5 to 14 rooms, room nights occupied were 0.8 million.

SUMMARY OF FINDINGS *continued*

Hotels, motels and serviced apartments continued

AVERAGE LENGTH OF STAY

The average length of stay in September quarter 2006 for hotels, motels and serviced apartments with 15 or more rooms was 2.2 days. For establishments with 5 to 14 rooms, the average length of stay for September quarter was 1.8 days.

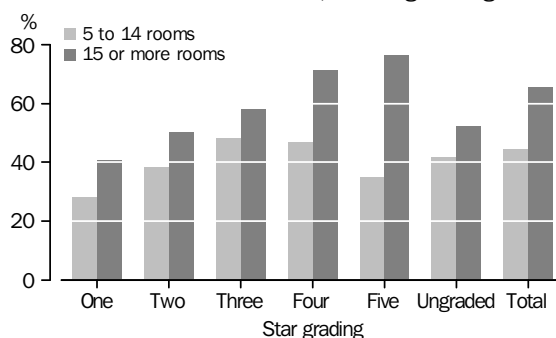
Queensland (2.7 days) reported the longest average length of stay for hotels, motels and serviced apartments with 15 or more rooms, followed by Western Australia and the ACT (2.3 days). The shortest average length of stay was in South Australia and Tasmania (1.9 days).

STAR GRADING

In September quarter 2006, the room occupancy rate for five-star hotels, motels and serviced apartments with 5 or more rooms was 75.9% compared with 36.6% for one-star. For hotels, motels and serviced apartments with 15 or more rooms, the room occupancy rate was 76.2% for five-star establishments compared with 40.7% for one-star.

For establishments with 5 to 14 rooms, three-star (48.1%) and four-star (46.8%) establishments had the highest room occupancy rates, compared with one-star establishments at 28.0%.

ROOM OCCUPANCY RATE, Star grading—September Qtr 2006



SUMMARY OF FINDINGS *continued*

*Caravan parks, holiday
flats, units and houses,
and visitor hostels*

KEY FIGURES, Australia

	<i>Jun Qtr 2006</i>	<i>Sep Qtr 2006</i>
Caravan parks		
Capacity (<i>no.</i>)	236 872	235 476
Site nights occupied ('000)	10 766	11 215
Site occupancy rate (%)	50.2	52.5
Takings from accommodation (\$'000)	203 323	220 388
Holiday flats, units and houses		
Capacity (<i>no.</i>)	28 281	27 941
Unit nights occupied ('000)	1 041	1 238
Unit occupancy rate (%)	40.5	48.4
Takings from accommodation (\$'000)	108 196	140 168
Visitor hostels		
Capacity (<i>no.</i>)	47 732	47 405
Guest nights occupied ('000)	1 928	2 032
Bed occupancy rate (%)	44.6	46.9
Takings from accommodation (\$'000)	45 136	49 155

ACCOMMODATION TAKINGS

In September quarter 2006, accommodation takings for caravan parks were \$220.4 million. New South Wales (\$67.1 million) had the highest accommodation takings for all caravan parks for September quarter 2006.

Short-term caravan park accommodation takings were \$182.0 million in September quarter 2006, while takings for long-term caravan parks were \$38.4 million in that quarter.

Accommodation takings for holiday flats, units and houses were \$140.2 million in September quarter 2006. For visitor hostels, accommodation takings were \$49.2 million.

OCCUPANCY RATE

The site occupancy rate for all caravan parks in September quarter 2006 was 52.5%. Short-term caravan park site occupancy rates were 49.0%, while the rate for long-term caravan parks was 75.4% in September quarter 2006.

For holiday flats, units and houses, the unit occupancy rate was 48.4% in September quarter 2006.

The bed occupancy rate for visitor hostels in September quarter 2006 was 46.9%. The Northern Territory (64.6%), the ACT (59.4%) and Queensland (58.8%) had the highest bed occupancy rates for visitor hostels in September quarter 2006.

LIST OF TABLES

page

AUSTRALIA

ORIGINAL, SEASONALLY ADJUSTED AND TREND

1	Hotels, motels and serviced apartments with 15 or more rooms	9
----------	--	---

SUMMARY

2	Hotels, motels and serviced apartments	10
3	Licensed hotels and resorts	12
4	Motels, private hotels and guest houses	14
5	Serviced apartments	16
6	Caravan parks	18
7	Holiday flats, units and houses	20
8	Visitor hostels	22

STAR GRADING

9	Hotels, motels and serviced apartments with 5-14 rooms	23
10	Hotels, motels and serviced apartments with 15 or more rooms	25
11	Hotels, motels and serviced apartments with 5 or more rooms	27

STATES AND TERRITORIES

12	Hotels, motels and serviced apartments with 5-14 rooms	29
13	Hotels, motels and serviced apartments with 15 or more rooms	32
14	Hotels, motels and serviced apartments with 5 or more rooms	35
15	Caravan parks, short-term	38
16	Caravan parks, long-term	41
17	Caravan parks, total	44
18	Holiday flats, units and houses, real estate agents	47
19	Holiday flats, units and houses, other letting entities	49
20	Holiday flats, units and houses, total	51
21	Visitor hostels	53

HOTELS, MOTELS AND SERVICED APARTMENTS WITH 15 OR MORE ROOMS, Australia

Period	ORIGINAL		SEASONALLY ADJUSTED		TREND	
	Room occupancy rate	Takings from accommodation(a)	Room occupancy rate	Takings from accommodation(a)	Room occupancy rate	Takings from accommodation(a)
	%	'000	%	'000	%	'000
2003						
March Quarter	59.1	1 244 695	59.2	1 234 889	59.4	1 231 882
June Quarter	55.3	1 159 500	58.5	1 274 182	59.3	1 296 766
September Quarter	62.5	1 373 488	60.9	1 335 175	60.4	1 342 984
December Quarter	63.5	1 499 344	61.9	1 430 676	61.4	1 384 245
2004						
March Quarter	61.6	1 398 573	61.2	1 373 918	61.8	1 403 750
June Quarter	58.4	1 277 463	61.9	1 407 545	61.9	1 409 220
September Quarter	64.2	1 485 716	62.6	1 439 001	62.2	1 425 310
December Quarter	63.7	1 513 029	62.1	1 444 070	62.7	1 459 548
2005						
March Quarter	63.6	1 525 330	63.4	1 500 207	63.0	1 498 570
June Quarter	59.7	1 395 043	63.3	1 544 581	63.1	1 535 606
September Quarter	64.4	1 618 246	62.8	1 570 059	63.0	1 563 080
December Quarter	64.5	1 650 876	62.6	1 570 571	63.2	1 591 888
2006						
March Quarter	64.2	1 649 208	64.3	1 633 950	63.8	1 629 349
June Quarter	60.9	1 526 511	64.6	1 684 072	64.1	1 666 336
September Quarter	65.3	1 740 492	63.5	1 679 882	64.2	1 695 816

(a) Break in time series between the March and June quarters 2003. See Explanatory Notes.

SUMMARY OF HOTELS, MOTELS AND SERVICED APARTMENTS, Australia

<i>Period</i>	<i>Establishments</i> no.	<i>Rooms</i> no.	<i>Bed spaces</i> no.	<i>Persons employed</i> no.	<i>Room nights occupied</i> '000	<i>Room occupancy rate</i> %
HOTELS MOTELS AND SERVICED APARTMENTS WITH 5 TO 14 ROOMS						
2005						
September Quarter	2 061	19 583	57 173	12 454	806.3	44.9
December Quarter	2 018	19 293	56 539	12 705	807.5	46.0
2006						
March Quarter	1 983	18 971	56 164	12 279	798.3	47.3
June Quarter	1 954	18 701	55 350	11 789	739.7	43.9
September Quarter	1 946	18 609	54 614	11 477	758.3	44.4
Year ended September 2006	3 103.8	45.4
HOTELS MOTELS AND SERVICED APARTMENTS WITH 15 OR MORE ROOMS						
2005						
June Quarter	4 151	209 823	596 395	112 991	11 342.3	59.7
September Quarter	4 172	211 646	601 697	114 947	12 535.4	64.4
December Quarter	4 169	212 784	603 192	114 808	12 543.5	64.5
2006						
March Quarter	4 187	212 598	607 385	114 042	12 225.5	64.2
June Quarter	4 194	213 035	609 540	114 647	11 748.7	60.9
September Quarter	4 186	213 768	614 417	116 839	12 829.8	65.3
Year ended September 2005	47 713.3	62.9
Year ended September 2006	49 347.5	63.7
HOTELS MOTELS AND SERVICED APARTMENTS WITH 5 OR MORE ROOMS						
2005						
September Quarter	6 233	231 229	658 870	127 401	13 341.7	62.8
December Quarter	6 187	232 077	659 731	127 513	13 351.0	63.0
2006						
March Quarter	6 170	231 569	663 549	126 321	13 023.8	62.8
June Quarter	6 148	231 736	664 890	126 436	12 488.3	59.5
September Quarter	6 132	232 377	669 031	128 316	13 588.1	63.7
Year ended September 2006	52 451.3	62.3
.. not applicable						

<i>Period</i>	<i>Guest nights occupied</i> '000	<i>Bed occupancy rate</i> %	<i>Guest arrivals</i> '000	<i>Average length of stay</i> days	<i>Takings from accommodation</i> \$'000
HOTELS MOTELS AND SERVICED APARTMENTS WITH 5 TO 14 ROOMS					
2005					
September Quarter	1 502.3	28.6	841.3	1.8	69 336
December Quarter	1 520.0	29.6	843.8	1.8	71 657
2006					
March Quarter	1 511.2	30.3	822.6	1.8	72 685
June Quarter	1 345.0	27.0	752.9	1.8	64 684
September Quarter	1 392.1	27.8	776.9	1.8	69 022
Year ended September 2006	5 768.2	28.7	3 196.2	1.8	278 048
HOTELS MOTELS AND SERVICED APARTMENTS WITH 15 OR MORE ROOMS					
2005					
June Quarter	19 630.0	36.4	8 947.5	2.2	1 395 043
September Quarter	22 495.5	40.7	9 853.1	2.3	1 618 246
December Quarter	22 545.3	41.0	9 771.8	2.3	1 650 876
2006					
March Quarter	21 994.2	40.5	9 465.5	2.3	1 649 208
June Quarter	20 326.3	36.9	9 159.3	2.2	1 526 511
September Quarter	22 585.1	40.0	10 079.5	2.2	1 740 492
Year ended September 2005	85 800.6	39.7	37 781.1	2.3	6 051 649
Year ended September 2006	87 450.9	39.6	38 476.0	2.3	6 567 088
HOTELS MOTELS AND SERVICED APARTMENTS WITH 5 OR MORE ROOMS					
2005					
September Quarter	23 997.7	39.6	10 694.4	2.2	1 687 582
December Quarter	24 065.3	40.0	10 615.6	2.3	1 722 533
2006					
March Quarter	23 505.4	39.6	10 288.1	2.3	1 721 893
June Quarter	21 671.3	36.1	9 912.1	2.2	1 591 196
September Quarter	23 977.1	39.0	10 856.4	2.2	1 809 514
Year ended September 2006	93 219.1	38.7	41 672.2	2.2	6 845 136

SUMMARY OF LICENSED HOTELS AND RESORTS, Australia

<i>Period</i>	<i>Establishments</i>	<i>Rooms</i>	<i>Bed spaces</i>	<i>Persons employed</i>	<i>Room nights occupied</i>	<i>Room occupancy rate</i>
	no.	no.	no.	no.	'000	%
.....						
LICENSED HOTELS WITH 5 TO 14 ROOMS						
2005						
September Quarter	478	4 478	11 864	7 431	148.9	36.2
December Quarter	478	4 487	11 969	7 706	155.0	37.7
2006						
March Quarter	467	4 406	11 903	7 493	155.1	39.2
June Quarter	451	4 255	11 470	7 055	141.2	36.5
September Quarter	452	4 291	11 490	6 678	143.3	36.3
Year ended September 2006	594.6	37.4
.....						
LICENSED HOTELS WITH 15 OR MORE ROOMS						
2005						
June Quarter	820	79 353	205 730	69 485	4 629.7	64.5
September Quarter	820	80 073	206 787	70 484	5 109.4	69.4
December Quarter	812	80 134	206 756	70 560	5 167.3	70.5
2006						
March Quarter	816	79 706	206 960	69 705	4 972.5	69.6
June Quarter	822	79 808	207 451	69 903	4 751.4	65.7
September Quarter	820	80 350	211 092	71 662	5 219.8	70.6
Year ended September 2005	19 682.8	68.4
Year ended September 2006	20 111.0	69.1
.....						
LICENSED HOTELS WITH 5 OR MORE ROOMS						
2005						
September Quarter	1 298	84 551	218 651	77 915	5 258.3	67.6
December Quarter	1 290	84 621	218 725	78 266	5 322.3	68.8
2006						
March Quarter	1 283	84 112	218 863	77 198	5 127.7	68.0
June Quarter	1 273	84 063	218 921	76 958	4 892.6	64.3
September Quarter	1 272	84 641	222 582	78 340	5 363.1	68.9
Year ended September 2006	20 705.6	67.5
.....						
.. not applicable						

SUMMARY OF LICENSED HOTELS AND RESORTS, Australia *continued*

<i>Period</i>	<i>Guest nights occupied</i>	<i>Bed occupancy rate</i>	<i>Guest arrivals</i>	<i>Average length of stay</i>	<i>Takings from accommodation</i>
	'000	%	'000	days	\$'000

LICENSED HOTELS WITH 5 TO 14 ROOMS

2005					
September Quarter	228.3	20.9	136.7	1.7	9 561
December Quarter	239.2	21.8	144.1	1.7	10 187
2006					
March Quarter	240.5	22.5	138.4	1.7	10 412
June Quarter	216.5	20.8	124.0	1.7	9 276
September Quarter	221.6	21.0	132.1	1.7	9 605
Year ended September 2006	917.8	21.5	538.6	1.7	39 479

LICENSED HOTELS WITH 15 OR MORE ROOMS

2005					
June Quarter	7 272.8	39.1	3 352.1	2.2	674 905
September Quarter	8 320.0	43.8	3 656.3	2.3	777 192
December Quarter	8 417.2	44.6	3 644.0	2.3	809 598
2006					
March Quarter	8 110.2	43.8	3 507.8	2.3	801 350
June Quarter	7 479.6	39.9	3 432.8	2.2	732 327
September Quarter	8 388.0	43.2	3 830.6	2.2	839 229
Year ended September 2005	32 081.1	42.9	14 118.9	2.3	2 951 364
Year ended September 2006	32 394.9	42.9	14 415.1	2.2	3 182 504

LICENSED HOTELS WITH 5 OR MORE ROOMS

2005					
September Quarter	8 548.3	42.5	3 793.1	2.3	786 753
December Quarter	8 656.4	43.4	3 788.1	2.3	819 785
2006					
March Quarter	8 350.6	42.6	3 646.2	2.3	811 762
June Quarter	7 696.1	38.9	3 556.8	2.2	741 603
September Quarter	8 609.6	42.0	3 962.7	2.2	848 834
Year ended September 2006	33 312.7	41.7	14 953.7	2.2	3 221 983

SUMMARY OF MOTELS, PRIVATE HOTELS AND GUEST HOUSES, Australia

<i>Period</i>	<i>Establishments</i>	<i>Rooms</i>	<i>Bed spaces</i>	<i>Persons employed</i>	<i>Room nights occupied</i>	<i>Room occupancy rate</i>
	no.	no.	no.	no.	'000	%
MOTELS AND GUEST HOUSES WITH 5 TO 14 ROOMS						
2005						
September Quarter	1 246	12 182	34 332	3 923	510.4	45.7
December Quarter	1 212	11 925	33 785	3 948	504.8	46.8
2006						
March Quarter	1 193	11 744	33 705	3 791	497.6	47.8
June Quarter	1 172	11 571	33 084	3 726	467.1	44.9
September Quarter	1 162	11 458	32 223	3 796	474.6	45.1
Year ended September 2006	1 944.1	46.2
MOTELS AND GUEST HOUSES WITH 15 OR MORE ROOMS						
2005						
June Quarter	2 476	86 442	249 619	29 381	4 216.6	54.0
September Quarter	2 485	86 440	250 100	29 875	4 573.9	57.6
December Quarter	2 485	86 798	249 385	29 477	4 490.4	56.7
2006						
March Quarter	2 491	86 584	250 908	29 646	4 392.8	56.8
June Quarter	2 491	86 847	251 385	29 971	4 361.1	55.6
September Quarter	2 482	86 566	250 771	30 195	4 613.5	58.0
Year ended September 2005	17 361.1	55.7
Year ended September 2006	17 857.7	56.8
MOTELS AND GUEST HOUSES WITH 5 OR MORE ROOMS						
2005						
September Quarter	3 731	98 622	284 432	33 798	5 084.3	56.1
December Quarter	3 697	98 723	283 170	33 425	4 995.2	55.5
2006						
March Quarter	3 684	98 328	284 613	33 437	4 890.4	55.7
June Quarter	3 663	98 418	284 469	33 697	4 828.2	54.4
September Quarter	3 644	98 024	282 994	33 991	5 088.1	56.5
Year ended September 2006	19 801.8	55.5
.. not applicable						

SUMMARY OF MOTELS, PRIVATE HOTELS AND GUEST HOUSES, Australia *continued*

<i>Period</i>	<i>Guest nights occupied</i>	<i>Bed occupancy rate</i>	<i>Guest arrivals</i>	<i>Average length of stay</i>	<i>Takings from accommodation</i>
	'000	%	'000	days	\$'000

MOTELS AND GUEST HOUSES WITH 5 TO 14 ROOMS

2005					
September Quarter	915.4	29.1	573.7	1.6	43 424
December Quarter	919.7	30.1	572.2	1.6	44 374
2006					
March Quarter	908.3	30.5	554.0	1.6	44 545
June Quarter	820.0	27.6	508.6	1.6	40 218
September Quarter	836.9	28.3	521.4	1.6	42 803
Year ended September 2006	3 484.9	29.2	2 156.2	1.6	171 940

MOTELS AND GUEST HOUSES WITH 15 OR MORE ROOMS

2005					
June Quarter	7 132.7	31.6	4 040.5	1.8	400 281
September Quarter	8 003.2	34.8	4 455.8	1.8	452 358
December Quarter	7 783.3	34.3	4 337.3	1.8	443 827
2006					
March Quarter	7 656.2	34.2	4 219.3	1.8	445 993
June Quarter	7 418.0	32.7	4 075.0	1.8	434 222
September Quarter	7 950.4	34.5	4 373.4	1.8	475 250
Year ended September 2005	30 414.4	33.8	16 969.2	1.8	1 678 818
Year ended September 2006	30 807.9	33.9	17 005.0	1.8	1 799 292

MOTELS AND GUEST HOUSES WITH 5 OR MORE ROOMS

2005					
September Quarter	8 918.6	34.1	5 029.5	1.8	495 783
December Quarter	8 703.0	33.8	4 909.5	1.8	488 201
2006					
March Quarter	8 564.5	33.8	4 773.3	1.8	490 538
June Quarter	8 238.0	32.1	4 583.6	1.8	474 441
September Quarter	8 787.3	33.8	4 894.8	1.8	518 053
Year ended September 2006	34 292.8	33.4	19 161.2	1.8	1 971 232

SUMMARY OF SERVICED APARTMENTS, Australia

<i>Period</i>	<i>Establishments</i>	<i>Rooms</i>	<i>Bed spaces</i>	<i>Persons employed</i>	<i>Room nights occupied</i>	<i>Room occupancy rate</i>
	no.	no.	no.	no.	'000	%
SERVICED APARTMENTS WITH 5 TO 14 ROOMS						
2005						
September Quarter	337	2 923	10 977	1 100	147.1	54.8
December Quarter	328	2 881	10 785	1 051	147.7	56.0
2006						
March Quarter	323	2 821	10 556	995	145.7	57.5
June Quarter	331	2 875	10 796	1 008	131.3	50.6
September Quarter	332	2 860	10 901	1 003	140.4	53.6
Year ended September 2006	565.1	54.4
SERVICED APARTMENTS WITH 15 OR MORE ROOMS						
2005						
June Quarter	855	44 028	141 046	14 125	2 495.9	62.4
September Quarter	867	45 133	144 810	14 588	2 852.1	68.7
December Quarter	872	45 852	147 051	14 771	2 885.8	68.7
2006						
March Quarter	880	46 308	149 517	14 691	2 860.1	68.7
June Quarter	881	46 380	150 704	14 773	2 636.2	62.5
September Quarter	884	46 852	152 554	14 982	2 996.6	69.8
Year ended September 2005	10 669.4	67.0
Year ended September 2006	11 378.8	67.5
SERVICED APARTMENTS WITH 5 OR MORE ROOMS						
2005						
September Quarter	1 204	48 056	155 787	15 688	2 999.2	67.9
December Quarter	1 200	48 733	157 836	15 822	3 033.5	68.0
2006						
March Quarter	1 203	49 129	160 073	15 686	3 005.8	68.1
June Quarter	1 212	49 255	161 500	15 781	2 767.5	61.8
September Quarter	1 216	49 712	163 455	15 985	3 137.0	68.9
Year ended September 2006	11 943.8	66.7
.. not applicable						

SUMMARY OF SERVICED APARTMENTS, Australia *continued*

<i>Period</i>	<i>Guest nights occupied</i>	<i>Bed occupancy rate</i>	<i>Guest arrivals</i>	<i>Average length of stay</i>	<i>Takings from accommodation</i>
	'000	%	'000	days	\$'000

SERVICED APARTMENTS WITH 5 TO 14 ROOMS

2005					
September Quarter	358.5	35.6	130.9	2.7	16 351
December Quarter	361.1	36.6	127.5	2.8	17 096
2006					
March Quarter	362.4	38.2	130.1	2.8	17 728
June Quarter	308.5	31.6	120.2	2.6	15 190
September Quarter	333.6	33.4	123.4	2.7	16 614
Year ended September 2006	1 365.6	34.9	501.3	2.7	66 629

SERVICED APARTMENTS WITH 15 OR MORE ROOMS

2005					
June Quarter	5 224.4	40.8	1 555.0	3.4	319 856
September Quarter	6 172.4	46.3	1 741.0	3.5	388 695
December Quarter	6 344.8	47.1	1 790.4	3.5	397 451
2006					
March Quarter	6 227.8	46.4	1 738.4	3.6	401 865
June Quarter	5 428.8	39.6	1 651.5	3.3	359 962
September Quarter	6 246.7	44.7	1 875.5	3.3	426 013
Year ended September 2005	23 305.1	45.6	6 693.0	3.5	1 421 466
Year ended September 2006	24 248.1	44.4	7 055.9	3.4	1 585 292

SERVICED APARTMENTS WITH 5 OR MORE ROOMS

2005					
September Quarter	6 530.9	45.6	1 871.9	3.5	405 046
December Quarter	6 705.9	46.4	1 918.0	3.5	414 548
2006					
March Quarter	6 590.2	45.8	1 868.6	3.5	419 593
June Quarter	5 737.2	39.1	1 771.7	3.2	375 152
September Quarter	6 580.3	43.9	1 998.9	3.3	442 627
Year ended September 2006	25 613.7	43.8	7 557.2	3.4	1 651 921

SUMMARY OF CARAVAN PARKS(a), Australia

CAPACITY

<i>Period</i>	<i>Establishments</i>	<i>On-site vans</i>	<i>Other powered sites</i>	<i>Unpowered sites</i>	<i>Cabins, flats units and villas</i>	<i>Total capacity</i>
	no.	no.	no.	no.	no.	no.

CARAVAN PARKS, SHORT TERM (b)

2005						
September Quarter	1 504	14 055	128 427	38 974	25 005	206 461
December Quarter	1 495	13 930	128 398	39 231	25 191	206 750
2006						
March Quarter	1 483	13 277	128 939	39 714	25 255	207 185
June Quarter	1 475	13 469	127 662	40 035	25 309	206 475
September Quarter	1 467	13 132	127 320	39 506	25 381	205 339
Year ended September 2006

CARAVAN PARKS, LONG TERM (b)

2005						
September Quarter	240	4 372	18 224	2 256	6 005	30 857
December Quarter	239	4 173	18 117	2 079	6 209	30 578
2006						
March Quarter	235	4 254	17 764	2 074	6 213	30 305
June Quarter	235	4 287	17 743	2 081	6 286	30 397
September Quarter	233	4 240	17 524	2 085	6 288	30 137
Year ended September 2006

CARAVAN PARKS, TOTAL

2005						
September Quarter	1 744	18 427	146 651	41 230	31 010	237 318
December Quarter	1 734	18 103	146 515	41 310	31 400	237 328
2006						
March Quarter	1 718	17 531	146 703	41 788	31 468	237 490
June Quarter	1 710	17 756	145 405	42 116	31 595	236 872
September Quarter	1 700	17 372	144 844	41 591	31 669	235 476
Year ended September 2006

.. not applicable

(b) For definitions of short-term and long-term caravan parks, see Glossary.

(a) Comprising establishments with 40 or more powered sites and cabins, flats, units and villas.

SUMMARY OF CARAVAN PARKS(a), Australia *continued*

<i>Period</i>	<i>Persons employed</i>	<i>Sites occupied by long-term guests</i>	<i>Other sites permanently reserved</i>	<i>Site nights occupied</i>	<i>Site occupancy rate</i>	<i>Takings from accommodation</i>
	no.	no.	no.	'000	%	\$'000
CARAVAN PARKS, SHORT TERM (b)						
2005						
September Quarter	8 493	19 408	41 358	9 208.7	49.1	169 549
December Quarter	8 689	19 038	41 405	8 790.0	46.5	175 370
2006						
March Quarter	8 636	19 156	40 624	9 032.9	48.5	189 208
June Quarter	8 496	18 985	40 240	8 729.2	46.8	168 334
September Quarter	8 509	18 957	40 912	9 124.9	49.0	182 011
Year ended September 2006	35 677.1	47.7	714 923

CARAVAN PARKS, LONG TERM (b)						
2005						
September Quarter	1 300	18 051	1 560	2 130.0	75.0	36 766
December Quarter	1 327	17 687	1 498	2 088.9	74.4	37 799
2006						
March Quarter	1 320	17 594	1 567	2 086.6	76.6	36 819
June Quarter	1 290	17 165	1 511	2 036.6	73.6	34 989
September Quarter	1 315	17 079	1 734	2 090.4	75.4	38 378
Year ended September 2006	8 302.4	75.0	147 984

CARAVAN PARKS, TOTAL						
2005						
September Quarter	9 793	37 459	42 918	11 338.7	52.5	206 315
December Quarter	10 016	36 725	42 903	10 878.9	50.1	213 168
2006						
March Quarter	9 956	36 750	42 191	11 119.5	52.1	226 027
June Quarter	9 786	36 150	41 751	10 765.8	50.2	203 323
September Quarter	9 824	36 036	42 646	11 215.3	52.5	220 388
Year ended September 2006	43 979.5	51.2	862 906

. . not applicable

(a) Comprising establishments with 40 or more powered sites and cabins, flats, units and villas.

(b) For definitions of short-term and long-term caravan parks, see Glossary.

SUMMARY OF HOLIDAY FLATS, UNITS AND HOUSES, Australia

CAPACITY

<i>Period</i>	<i>Letting entities(a)</i>	<i>Single bedroom</i>	<i>Multiple bedroom</i>	<i>Total</i>	<i>Bed spaces</i>	<i>Persons employed(b)</i>
no.	no.	no.	no.	no.	no.	no.

REAL ESTATE AGENTS

2005						
September Quarter	170	606	13 123	13 729	74 671	..
December Quarter	168	603	13 354	13 957	75 846	..
2006						
March Quarter	166	664	13 490	14 154	76 305	..
June Quarter	164	601	13 141	13 742	75 441	..
September Quarter	164	636	12 865	13 501	75 757	..
Year ended September 2006

OTHER LETTING ENTITIES

2005						
September Quarter	412	4 159	10 077	14 236	57 397	2 599
December Quarter	415	4 113	10 322	14 435	58 331	2 650
2006						
March Quarter	418	4 383	10 177	14 560	58 849	2 402
June Quarter	415	4 190	10 349	14 539	58 745	2 395
September Quarter	418	4 097	10 343	14 440	58 780	2 535
Year ended September 2006

HOLIDAY FLATS, UNITS AND HOUSES, TOTAL

2005						
September Quarter	582	4 765	23 200	27 965	132 068	..
December Quarter	583	4 716	23 676	28 392	134 177	..
2006						
March Quarter	584	5 047	23 667	28 714	135 154	..
June Quarter	579	4 791	23 490	28 281	134 186	..
September Quarter	582	4 733	23 208	27 941	134 537	..
Year ended September 2006

.. not applicable

(b) Employment numbers exclude real estate agents and their employees.

(a) The number of owners, managers or real estate agents with 15 or more self-contained units.

<i>Period</i>	<i>Unit nights occupied</i>	<i>Unit occupancy rate</i>	<i>Unit lettings</i>	<i>Average length of stay</i>	<i>Takings from accommodation</i>
	'000	%	'000	days	\$'000
REAL ESTATE AGENTS					
2005					
September Quarter	392.0	31.0	66.4	5.9	33 668
December Quarter	437.7	34.1	84.0	5.2	45 320
2006					
March Quarter	492.6	38.7	81.7	6.0	52 386
June Quarter	313.1	25.0	59.5	5.3	27 187
September Quarter	339.5	27.6	61.3	5.5	32 234
Year ended September 2006	1 582.9	31.4	286.5	5.5	157 126
OTHER LETTING ENTITIES					
2005					
September Quarter	919.0	70.3	271.3	3.4	102 317
December Quarter	905.4	68.6	296.4	3.1	105 436
2006					
March Quarter	858.2	65.7	287.0	3.0	103 799
June Quarter	728.1	55.1	259.8	2.8	81 009
September Quarter	899.0	67.8	299.2	3.0	107 934
Year ended September 2006	3 390.7	64.3	1 142.4	3.0	398 177
HOLIDAY FLATS, UNITS AND HOUSES, TOTAL					
2005					
September Quarter	1 310.9	51.0	337.7	3.9	135 985
December Quarter	1 343.1	51.6	380.4	3.5	150 755
2006					
March Quarter	1 350.8	52.4	368.7	3.7	156 184
June Quarter	1 041.2	40.5	319.3	3.3	108 196
September Quarter	1 238.5	48.4	360.5	3.4	140 168
Year ended September 2006	4 973.6	48.2	1 428.9	3.5	555 303

SUMMARY OF VISITOR HOSTELS (a), Australia

	<i>Establishments</i>	<i>Bed spaces</i>	<i>Persons employed</i>	<i>Guest arrivals</i>	<i>Guest nights occupied</i>	<i>Takings from accommodation</i>	<i>Bed occupancy rate</i>	<i>Average length of stay</i>
	no.	no.	no.	no.	no.	\$'000	%	days
2005								
September Quarter	452	48 226	3 404	770 540	2 010 095	46 328	45.5	2.6
December Quarter	456	48 332	3 337	822 041	2 110 213	49 893	47.6	2.6
2006								
March Quarter	451	48 042	3 281	843 472	2 324 677	53 337	54.1	2.8
June Quarter	442	47 732	3 277	701 613	1 927 517	45 136	44.6	2.7
September Quarter	433	47 405	3 250	765 362	2 031 646	49 155	46.9	2.7
Year ended September 2006	3 132 488	8 394 053	197 522	48.3	2.7

. . not applicable

(a) Comprising establishments with 25 or more bed spaces.

STAR GRADING

Period	1	2	3	4	5	Ungraded	Total
--------	---	---	---	---	---	----------	-------

ESTABLISHMENTS, CAPACITY AND EMPLOYMENT (no.)

September Quarter 2005

Establishments	92	331	829	397	20	392	2 061
Rooms	844	3 221	8 595	3 269	155	3 499	19 583
Bed spaces	2 055	9 420	25 430	9 709	361	10 198	57 173
Persons employed	906	2 808	3 362	1 519	108	3 751	12 454

September Quarter 2006

Establishments	77	304	858	381	20	306	1 946
Rooms	725	2 940	8 844	3 141	161	2 798	18 609
Bed spaces	1 839	8 524	26 356	9 504	368	8 023	54 614
Persons employed	817	2 508	3 602	1 426	100	3 024	11 477

ROOM NIGHTS OCCUPIED ('000)

2005

September Quarter	25.1	116.1	381.7	139.9	5.9	137.7	806.3
-------------------	------	-------	-------	-------	-----	-------	-------

2006

July	6.4	34.0	127.3	44.4	1.8	36.1	250.0
August	6.0	34.3	127.6	43.5	1.5	35.5	248.4
September	6.3	34.4	135.2	46.5	1.9	35.6	260.0
September Quarter	18.7	102.8	390.2	134.4	5.1	107.2	758.3

ROOM OCCUPANCY RATE (%)

2005

September Quarter	32.3	39.3	48.3	46.9	41.1	43.0	44.9
-------------------	------	------	------	------	------	------	------

2006

July	28.3	37.3	46.7	45.9	35.2	41.7	43.5
August	26.6	37.7	46.6	45.1	30.5	41.0	43.2
September	29.2	39.0	51.0	49.6	38.4	42.5	46.6
September Quarter	28.0	38.0	48.1	46.8	34.7	41.7	44.4

GUEST NIGHTS OCCUPIED ('000)

2005

September Quarter	38.3	199.5	694.6	299.7	11.2	258.9	1 502.3
-------------------	------	-------	-------	-------	------	-------	---------

2006

July	9.6	56.5	231.3	94.8	3.5	66.5	462.1
August	9.0	57.0	221.2	90.3	3.0	64.2	444.6
September	9.8	58.7	248.4	100.7	3.6	64.1	485.3
September Quarter	28.3	172.2	700.8	285.8	10.1	194.7	1 392.1

BED OCCUPANCY RATE (%)

2005

September Quarter	20.3	23.1	29.7	33.8	33.8	27.7	28.6
-------------------	------	------	------	------	------	------	------

2006

July	16.8	21.4	28.4	32.3	30.9	26.8	27.4
August	15.7	21.6	27.1	30.9	26.0	25.9	26.3
September	17.7	23.0	31.5	35.5	32.9	26.7	29.7
September Quarter	16.7	22.0	29.0	32.8	29.9	26.4	27.8

	STAR GRADING						
Period	1	2	3	4	5	Ungraded	Total
GUEST ARRIVALS ('000)							
2005							
September Quarter	24.7	121.3	415.0	138.3	5.9	136.1	841.3
2006							
July	5.6	35.1	137.9	42.9	1.8	34.2	257.5
August	5.4	34.1	132.1	41.1	1.6	33.0	247.2
September	5.8	36.7	147.1	47.0	1.9	33.6	272.1
September Quarter	16.8	105.8	417.2	130.9	5.4	100.8	776.9
AVERAGE LENGTH OF STAY (days)							
2005							
September Quarter	1.6	1.6	1.7	2.2	1.9	1.9	1.8
2006							
July	1.7	1.6	1.7	2.2	1.9	1.9	1.8
August	1.7	1.7	1.7	2.2	1.9	1.9	1.8
September	1.7	1.6	1.7	2.1	1.9	1.9	1.8
September Quarter	1.7	1.6	1.7	2.2	1.9	1.9	1.8
TAKINGS FROM ACCOMMODATION (\$'000)							
2005							
September Quarter	1 332	7 435	29 788	17 600	1 109	12 071	69 336
2006							
July	315	2 219	10 403	6 184	374	3 398	22 893
August	315	2 290	10 231	5 961	339	3 391	22 528
September	358	2 253	10 986	6 379	406	3 219	23 601
September Quarter	987	6 762	31 621	18 525	1 120	10 008	69 022
AVERAGE TAKINGS PER ROOM NIGHT OCCUPIED (\$)							
2005							
September Quarter	53.1	64.1	78.0	125.8	189.3	87.7	86.0
2006							
July	49.5	65.3	81.7	139.3	213.0	94.2	91.6
August	52.6	66.7	80.2	137.2	223.0	95.5	90.7
September	56.3	65.5	81.2	137.1	219.0	90.4	90.8
September Quarter	52.8	65.8	81.0	137.9	218.1	93.4	91.0
AVERAGE TAKINGS PER ROOM NIGHT AVAILABLE (\$)							
2005							
September Quarter	17.2	25.2	37.7	59.0	77.8	37.7	38.6
2006							
July	14.0	24.3	38.1	63.9	74.9	39.3	39.8
August	14.0	25.1	37.4	61.8	68.0	39.2	39.2
September	16.4	25.5	41.5	68.0	84.2	38.4	42.4
September Quarter	14.8	25.0	39.0	64.6	75.6	38.9	40.4

STAR GRADING

Period	1	2	3	4	5	Ungraded	Total
--------	---	---	---	---	---	----------	-------

ESTABLISHMENTS, CAPACITY AND EMPLOYMENT (no.)

September Quarter 2005

Establishments	47	306	2 021	1 458	117	223	4 172
Rooms	1 365	9 561	72 466	97 470	24 614	6 170	211 646
Bed spaces	4 535	27 214	211 822	280 272	61 255	16 599	601 697
Persons employed	644	3 890	24 728	48 165	34 265	3 255	114 947

September Quarter 2006

Establishments	51	297	2 085	1 439	105	209	4 186
Rooms	1 506	9 347	74 916	99 091	22 816	6 092	213 768
Bed spaces	4 943	26 988	219 318	289 880	56 644	16 644	614 417
Persons employed	566	3 787	25 743	50 265	33 134	3 344	116 839

ROOM NIGHTS OCCUPIED ('000)

2005

September Quarter	62.7	421.3	3 919.1	6 203.7	1 646.7	281.9	12 535.4
-------------------	------	-------	---------	---------	---------	-------	----------

2006

July	20.6	144.1	1 314.5	2 125.5	518.6	98.1	4 221.4
August	21.0	143.1	1 319.9	2 170.0	547.1	99.7	4 300.8
September	14.8	144.3	1 353.8	2 166.2	533.2	95.4	4 307.7
September Quarter	56.4	431.5	3 988.1	6 461.7	1 599.0	293.2	12 829.8

ROOM OCCUPANCY RATE (%)

2005

September Quarter	50.4	47.9	58.8	69.2	72.7	49.8	64.4
-------------------	------	------	------	------	------	------	------

2006

July	44.0	49.7	56.6	69.5	73.3	52.0	63.8
August	44.9	49.4	56.9	70.9	77.4	52.8	65.0
September	32.9	51.5	60.3	72.9	77.9	52.3	67.2
September Quarter	40.7	50.2	57.9	71.1	76.2	52.3	65.3

GUEST NIGHTS OCCUPIED ('000)

2005

September Quarter	129.6	749.2	7 278.2	11 225.9	2 630.7	481.8	22 495.5
-------------------	-------	-------	---------	----------	---------	-------	----------

2006

July	51.1	267.3	2 397.9	3 866.2	820.3	173.2	7 576.0
August	49.0	259.7	2 303.6	3 754.3	842.4	170.3	7 379.2
September	27.3	259.4	2 449.1	3 896.4	837.2	160.4	7 629.9
September Quarter	127.4	786.4	7 150.6	11 516.9	2 499.9	503.9	22 585.1

BED OCCUPANCY RATE (%)

2005

September Quarter	31.2	29.9	37.4	43.6	46.7	31.6	40.7
-------------------	------	------	------	------	------	------	------

2006

July	33.3	31.9	35.3	43.2	46.7	33.6	39.8
August	32.0	31.0	33.9	41.9	48.0	33.0	38.8
September	18.4	32.0	37.3	44.8	49.3	32.2	41.4
September Quarter	28.0	31.7	35.5	43.3	48.0	32.9	40.0

	STAR GRADING						
Period	1	2	3	4	5	Ungraded	Total
GUEST ARRIVALS ('000)							
2005							
September Quarter	54.0	431.4	3 570.5	4 549.9	1 047.0	200.4	9 853.1
2006							
July	21.6	152.7	1 186.1	1 560.8	351.4	74.2	3 346.9
August	18.7	143.9	1 156.8	1 536.8	363.6	71.9	3 291.8
September	14.8	144.7	1 244.8	1 610.4	356.9	69.3	3 440.9
September Quarter	55.1	441.3	3 587.7	4 708.0	1 071.8	215.5	10 079.5
AVERAGE LENGTH OF STAY (days)							
2005							
September Quarter	2.4	1.7	2.0	2.5	2.5	2.4	2.3
2006							
July	2.4	1.8	2.0	2.5	2.3	2.3	2.3
August	2.6	1.8	2.0	2.4	2.3	2.4	2.2
September	1.8	1.8	2.0	2.4	2.3	2.3	2.2
September Quarter	2.3	1.8	2.0	2.4	2.3	2.3	2.2
TAKINGS FROM ACCOMMODATION (\$'000)							
2005							
September Quarter	5 607	32 139	370 954	838 464	340 338	30 744	1 618 246
2006							
July	1 545	11 211	130 310	301 521	113 615	11 609	569 811
August	1 581	11 028	130 157	310 643	119 954	11 491	584 854
September	1 055	10 540	131 796	312 934	119 702	9 801	585 827
September Quarter	4 180	32 779	392 262	925 098	353 271	32 901	1 740 492
AVERAGE TAKINGS PER ROOM NIGHT OCCUPIED (\$)							
2005							
September Quarter	89.4	76.3	94.7	135.2	206.7	109.1	129.1
2006							
July	75.1	77.8	99.1	141.9	219.1	118.3	135.0
August	75.4	77.1	98.6	143.2	219.2	115.2	136.0
September	71.1	73.0	97.4	144.5	224.5	102.7	136.0
September Quarter	74.2	76.0	98.4	143.2	220.9	112.2	135.7
AVERAGE TAKINGS PER ROOM NIGHT AVAILABLE (\$)							
2005							
September Quarter	45.0	36.6	55.7	93.6	150.3	54.3	83.2
2006							
July	33.1	38.7	56.1	98.6	160.6	61.5	86.2
August	33.9	38.1	56.1	101.4	169.6	60.8	88.4
September	23.4	37.6	58.7	105.3	174.9	53.7	91.4
September Quarter	30.2	38.1	56.9	101.7	168.3	58.7	88.6

STAR GRADING

Period	1	2	3	4	5	Ungraded	Total
--------	---	---	---	---	---	----------	-------

ESTABLISHMENTS, CAPACITY AND EMPLOYMENT (no.)

September Quarter 2005

Establishments	139	637	2 850	1 855	137	615	6 233
Rooms	2 209	12 782	81 061	100 739	24 769	9 669	231 229
Bed spaces	6 590	36 634	237 252	289 981	61 616	26 797	658 870
Persons employed	1 550	6 698	28 090	49 684	34 373	7 006	127 401

September Quarter 2006

Establishments	128	601	2 943	1 820	125	515	6 132
Rooms	2 231	12 287	83 760	102 232	22 977	8 890	232 377
Bed spaces	6 782	35 512	245 674	299 384	57 012	24 667	669 031
Persons employed	1 383	6 295	29 345	51 691	33 234	6 368	128 316

ROOM NIGHTS OCCUPIED ('000)

2005

September Quarter	87.8	537.4	4 300.8	6 343.6	1 652.5	419.5	13 341.7
-------------------	------	-------	---------	---------	---------	-------	----------

2006

July	26.9	178.1	1 441.8	2 169.9	520.4	134.2	4 471.3
August	26.9	177.4	1 447.5	2 213.5	548.7	135.2	4 549.1
September	21.2	178.7	1 489.0	2 212.7	535.1	131.0	4 567.7
September Quarter	75.1	534.2	4 378.3	6 596.1	1 604.1	400.4	13 588.1

ROOM OCCUPANCY RATE (%)

2005

September Quarter	43.5	45.8	57.7	68.5	72.5	47.3	62.8
-------------------	------	------	------	------	------	------	------

2006

July	38.9	46.8	55.6	68.8	73.1	48.7	62.2
August	38.9	46.6	55.8	70.1	77.0	49.1	63.3
September	31.7	48.5	59.3	72.2	77.6	49.2	65.5
September Quarter	36.6	47.3	56.9	70.3	75.9	49.0	63.7

GUEST NIGHTS OCCUPIED ('000)

2005

September Quarter	167.9	948.7	7 972.8	11 525.6	2 642.0	740.8	23 997.7
-------------------	-------	-------	---------	----------	---------	-------	----------

2006

July	60.6	323.8	2 629.2	3 960.9	823.9	239.7	8 038.1
August	58.0	316.7	2 524.8	3 844.6	845.3	234.5	7 823.8
September	37.1	318.2	2 697.5	3 997.1	840.8	224.5	8 115.2
September Quarter	155.7	958.6	7 851.5	11 802.7	2 510.0	698.7	23 977.1

BED OCCUPANCY RATE (%)

2005

September Quarter	27.8	28.2	36.6	43.2	46.6	30.1	39.6
-------------------	------	------	------	------	------	------	------

2006

July	28.8	29.4	34.5	42.8	46.6	31.4	38.8
August	27.6	28.8	33.2	41.5	47.8	30.7	37.8
September	18.2	29.9	36.6	44.5	49.2	30.4	40.5
September Quarter	24.9	29.3	34.8	42.9	47.9	30.8	39.0

	STAR GRADING						
Period	1	2	3	4	5	Ungraded	Total
GUEST ARRIVALS ('000)							
2005							
September Quarter	78.7	552.7	3 985.5	4 688.1	1 052.8	336.6	10 694.4
2006							
July	27.2	187.8	1 324.0	1 603.7	353.2	108.5	3 604.4
August	24.1	178.0	1 288.9	1 577.9	365.2	104.9	3 539.0
September	20.6	181.3	1 392.0	1 657.3	358.8	102.9	3 713.0
September Quarter	71.9	547.1	4 004.9	4 839.0	1 077.2	316.3	10 856.4
AVERAGE LENGTH OF STAY (days)							
2005							
September Quarter	2.1	1.7	2.0	2.5	2.5	2.2	2.2
2006							
July	2.2	1.7	2.0	2.5	2.3	2.2	2.2
August	2.4	1.8	2.0	2.4	2.3	2.2	2.2
September	1.8	1.8	1.9	2.4	2.3	2.2	2.2
September Quarter	2.2	1.8	2.0	2.4	2.3	2.2	2.2
TAKINGS FROM ACCOMMODATION (\$'000)							
2005							
September Quarter	6 939	39 574	400 741	856 064	341 447	42 815	1 687 582
2006							
July	1 860	13 430	140 713	307 705	113 989	15 007	592 704
August	1 895	13 318	140 387	316 605	120 294	14 883	607 381
September	1 413	12 793	142 782	319 313	120 108	13 019	609 428
September Quarter	5 168	39 541	423 882	943 623	354 391	42 909	1 809 514
AVERAGE TAKINGS PER ROOM NIGHT OCCUPIED (\$)							
2005							
September Quarter	79.0	73.6	93.2	134.9	206.6	102.1	126.5
2006							
July	69.1	75.4	97.6	141.8	219.1	111.8	132.6
August	70.4	75.1	97.0	143.0	219.2	110.1	133.5
September	66.7	71.6	95.9	144.3	224.5	99.4	133.4
September Quarter	68.8	74.0	96.8	143.1	220.9	107.2	133.2
AVERAGE TAKINGS PER ROOM NIGHT AVAILABLE (\$)							
2005							
September Quarter	34.3	33.7	53.8	92.5	149.8	48.3	79.4
2006							
July	26.9	35.3	54.2	97.5	160.0	54.5	82.5
August	27.4	35.0	54.1	100.2	168.9	54.0	84.5
September	21.1	34.7	56.9	104.1	174.2	48.9	87.5
September Quarter	25.2	35.0	55.0	100.6	167.6	52.5	84.8

<i>Period</i>	<i>New South Wales</i>	<i>Victoria</i>	<i>Queensland</i>	<i>South Australia</i>	<i>Western Australia</i>	<i>Tasmania</i>	<i>Northern Territory</i>	<i>Australian Capital Territory</i>	<i>Australia</i>
ESTABLISHMENTS (no.)									
2005									
December Quarter	641	485	455	163	132	128	12	2	2 018
2006									
March Quarter	631	475	445	161	130	126	13	2	1 983
June Quarter	625	471	433	153	132	125	13	2	1 954
September Quarter	623	466	426	150	140	125	14	2	1 946
ROOMS (no.)									
2005									
December Quarter	6 329	4 657	4 523	1 524	1 080	1 041	np	np	19 293
2006									
March Quarter	6 225	4 561	4 418	1 521	1 084	1 005	np	np	18 971
June Quarter	6 168	4 513	4 294	1 451	1 113	np	137	np	18 701
September Quarter	6 127	4 464	4 230	1 426	1 178	np	152	np	18 609
BED SPACES (no.)									
2005									
December Quarter	18 538	13 106	14 036	4 194	3 434	2 839	np	np	56 539
2006									
March Quarter	18 282	12 993	13 995	4 219	3 426	2 821	np	np	56 164
June Quarter	18 130	12 905	13 506	4 036	3 495	np	370	np	55 350
September Quarter	17 855	12 710	13 191	3 895	3 600	np	459	np	54 614
PERSONS EMPLOYED (no.)									
2005									
December Quarter	3 429	2 991	2 648	1 787	915	876	np	np	12 705
2006									
March Quarter	3 242	2 852	2 515	1 773	995	843	np	np	12 279
June Quarter	3 068	2 733	2 447	1 755	940	np	60	np	11 789
September Quarter	3 130	2 590	2 348	1 674	912	np	64	np	11 477
ROOM NIGHTS OCCUPIED ('000)									
2005									
December Quarter	253.2	183.0	222.4	55.7	45.4	43.7	np	np	807.5
2006									
March Quarter	249.2	191.5	200.3	56.2	42.2	55.2	np	np	798.3
June Quarter	230.5	166.2	207.4	50.3	44.6	np	4.3	np	739.7
September Quarter	237.6	153.8	233.0	49.7	49.2	np	6.7	np	758.3
ROOM OCCUPANCY RATE (%)									
2005									
December Quarter	44.2	43.4	53.6	39.8	46.6	45.8	np	np	46.0
2006									
March Quarter	45.0	47.0	50.7	41.0	45.1	61.3	np	np	47.3
June Quarter	41.7	40.8	53.3	38.3	44.4	np	34.9	np	43.9
September Quarter	42.3	37.5	59.9	37.9	45.5	np	48.2	np	44.4

np not available for publication but included in totals where applicable, unless otherwise indicated

<i>Period</i>	<i>New South Wales</i>	<i>Victoria</i>	<i>Queensland</i>	<i>South Australia</i>	<i>Western Australia</i>	<i>Tasmania</i>	<i>Northern Territory</i>	<i>Australian Capital Territory</i>	<i>Australia</i>
GUEST NIGHTS OCCUPIED ('000)									
2005									
December Quarter	477.7	344.7	415.2	97.3	95.2	81.4	np	np	1 520.0
2006									
March Quarter	470.9	369.7	370.2	94.3	88.6	110.8	np	np	1 511.2
June Quarter	414.8	302.8	379.0	81.2	92.7	np	7.9	np	1 345.0
September Quarter	435.5	279.6	428.8	82.4	102.2	np	12.8	np	1 392.1
BED OCCUPANCY RATE (%)									
2005									
December Quarter	28.5	29.1	32.3	25.3	30.6	31.2	np	np	29.6
2006									
March Quarter	29.0	31.9	29.6	24.8	30.0	43.8	np	np	30.3
June Quarter	25.6	26.0	31.0	22.2	29.4	np	23.6	np	27.0
September Quarter	26.6	24.0	35.3	23.0	31.0	np	30.2	np	27.8
GUEST ARRIVALS ('000)									
2005									
December Quarter	282.5	205.7	207.2	52.9	42.0	48.4	np	np	843.8
2006									
March Quarter	269.3	206.1	185.8	53.5	38.2	65.2	np	np	822.6
June Quarter	241.9	180.2	199.1	47.0	40.4	np	4.5	np	752.9
September Quarter	260.9	170.4	210.6	46.8	47.8	np	8.8	np	776.9
AVERAGE LENGTH OF STAY (days)									
2005									
December Quarter	1.7	1.7	2.0	1.8	2.3	1.7	np	np	1.8
2006									
March Quarter	1.7	1.8	2.0	1.8	2.3	1.7	np	np	1.8
June Quarter	1.7	1.7	1.9	1.7	2.3	np	1.7	np	1.8
September Quarter	1.7	1.6	2.0	1.8	2.1	np	1.5	np	1.8
TAKINGS FROM ACCOMMODATION (\$'000)									
2005									
December Quarter	22 818	16 803	17 694	4 545	4 992	4 528	np	np	71 657
2006									
March Quarter	23 222	17 628	15 954	4 757	4 769	6 112	np	np	72 685
June Quarter	20 456	14 672	16 586	4 154	4 742	np	311	np	64 684
September Quarter	22 679	14 260	19 100	4 183	5 487	np	602	np	69 022
AVERAGE TAKINGS PER ROOM NIGHT OCCUPIED (\$)									
2005									
December Quarter	90.1	91.8	79.5	81.6	109.9	103.5	np	np	88.7
2006									
March Quarter	93.2	92.1	79.6	84.7	113.1	110.7	np	np	91.0
June Quarter	88.7	88.3	80.0	82.5	106.4	np	71.5	np	87.5
September Quarter	95.4	92.7	82.0	84.2	111.6	np	89.3	np	91.0

np not available for publication but included in totals where applicable, unless otherwise indicated

<i>Period</i>	<i>New South Wales</i>	<i>Victoria</i>	<i>Queensland</i>	<i>South Australia</i>	<i>Western Australia</i>	<i>Tasmania</i>	<i>Northern Territory</i>	<i>Australian Capital Territory</i>	<i>Australia</i>
AVERAGE TAKINGS PER ROOM NIGHT AVAILABLE (\$)									
2005									
December Quarter	39.8	39.9	42.7	32.5	51.2	47.5	np	np	40.8
2006									
March Quarter	41.9	43.3	40.4	34.8	51.0	67.9	np	np	43.0
June Quarter	37.0	36.1	42.7	31.6	47.2	np	24.9	np	38.4
September Quarter	40.3	34.8	49.1	31.9	50.8	np	43.1	np	40.4

np not available for publication but included in totals where applicable, unless otherwise indicated

<i>Period</i>	<i>New South Wales</i>	<i>Victoria</i>	<i>Queensland</i>	<i>South Australia</i>	<i>Western Australia</i>	<i>Tasmania</i>	<i>Northern Territory</i>	<i>Australian Capital Territory</i>	<i>Australia</i>
ESTABLISHMENTS (no.)									
2005									
June Quarter	1 396	780	1 063	257	350	154	93	58	4 151
September Quarter	1 406	781	1 069	258	350	154	95	59	4 172
December Quarter	1 405	781	1 069	254	355	153	94	58	4 169
2006									
March Quarter	1 416	786	1 073	251	352	157	94	58	4 187
June Quarter	1 418	795	1 070	254	350	154	94	59	4 194
September Quarter	1 415	791	1 073	251	348	156	94	58	4 186
ROOMS (no.)									
2005									
June Quarter	66 227	36 443	56 652	11 779	20 890	6 401	6 472	4 959	209 823
September Quarter	67 506	36 535	56 896	11 873	20 807	6 519	6 541	4 969	211 646
December Quarter	67 757	36 681	57 127	11 726	21 687	6 419	6 477	4 910	212 784
2006									
March Quarter	68 062	37 087	56 843	11 661	21 036	6 520	6 488	4 901	212 598
June Quarter	68 249	37 339	56 682	11 671	21 082	6 458	6 499	5 055	213 035
September Quarter	68 210	37 532	56 970	11 645	21 172	6 486	6 707	5 046	213 768
BED SPACES (no.)									
2005									
June Quarter	183 885	98 663	173 124	32 581	56 981	18 528	18 977	13 656	596 395
September Quarter	186 668	98 992	174 612	32 970	56 996	18 565	19 062	13 832	601 697
December Quarter	186 259	99 226	175 723	32 173	58 741	18 614	18 873	13 583	603 192
2006									
March Quarter	189 188	100 882	176 667	32 087	57 356	18 962	18 901	13 342	607 385
June Quarter	189 699	101 918	176 640	31 907	57 448	18 673	19 110	14 145	609 540
September Quarter	191 372	102 716	177 553	31 961	57 815	18 789	19 572	14 639	614 417
PERSONS EMPLOYED (no.)									
2005									
June Quarter	32 735	21 608	31 425	7 199	9 968	4 421	3 163	2 472	112 991
September Quarter	34 076	21 650	31 736	7 241	10 082	4 555	3 072	2 535	114 947
December Quarter	33 813	21 659	31 790	7 280	10 265	4 643	2 979	2 379	114 808
2006									
March Quarter	33 477	21 709	31 224	7 201	10 235	4 708	3 013	2 475	114 042
June Quarter	33 754	21 715	31 268	7 312	10 426	4 436	3 137	2 599	114 647
September Quarter	34 132	21 751	32 544	7 450	10 470	4 454	3 479	2 559	116 839
ROOM NIGHTS OCCUPIED ('000)									
2005									
June Quarter	3 488.3	1 953.6	3 197.1	599.6	1 119.6	303.0	368.7	312.5	11 342.3
September Quarter	3 849.4	2 011.8	3 783.8	630.2	1 214.0	265.4	456.5	324.3	12 535.4
December Quarter	3 906.0	2 126.0	3 556.9	664.0	1 274.2	363.9	331.5	320.9	12 543.5
2006									
March Quarter	3 850.9	2 197.4	3 262.2	673.9	1 224.7	428.0	278.3	310.1	12 225.5
June Quarter	3 613.3	2 051.8	3 251.1	632.5	1 198.2	300.5	382.5	318.8	11 748.7
September Quarter	3 872.3	2 091.1	3 845.9	661.5	1 279.4	262.7	468.6	348.4	12 829.8
Year ended September 2005	14 910.8	8 110.2	13 552.4	2 518.2	4 637.6	1 337.8	1 418.0	1 228.3	47 713.3
Year ended September 2006	15 242.6	8 466.2	13 916.1	2 632.0	4 976.5	1 355.1	1 460.9	1 298.1	49 347.5

Period	New South Wales	Victoria	Queensland	South Australia	Western Australia	Tasmania	Northern Territory	Australian Capital Territory	Australia
ROOM OCCUPANCY RATE (%)									
2005									
June Quarter	58.5	59.4	62.0	56.0	59.1	52.1	63.2	69.2	59.7
September Quarter	62.0	60.0	72.3	57.8	63.5	44.3	75.9	70.9	64.4
December Quarter	63.5	63.7	67.8	61.6	64.0	61.6	55.7	71.0	64.5
2006									
March Quarter	63.4	66.4	63.8	64.2	64.7	74.0	47.7	70.3	64.2
June Quarter	58.7	61.1	63.0	59.6	62.5	51.1	64.7	69.3	60.9
September Quarter	61.7	60.9	73.4	61.8	65.7	44.1	75.9	75.0	65.3
Year ended September 2005	62.4	61.9	65.9	58.9	61.2	57.6	60.1	68.2	62.9
Year ended September 2006	61.8	63.0	67.1	61.8	64.2	57.6	61.2	71.4	63.7
GUEST NIGHTS OCCUPIED ('000)									
2005									
June Quarter	5 856.9	3 199.1	6 131.6	942.3	1 835.5	540.3	633.0	491.4	19 630.0
September Quarter	6 730.0	3 375.0	7 500.0	989.7	2 050.4	463.2	817.1	570.3	22 495.5
December Quarter	6 849.3	3 572.1	7 128.6	1 098.1	2 170.2	654.8	556.2	516.1	22 545.3
2006									
March Quarter	6 746.8	3 754.7	6 480.7	1 114.2	2 109.8	826.8	476.9	484.4	21 994.2
June Quarter	6 069.0	3 390.3	6 172.4	1 001.0	1 946.4	534.7	699.0	513.6	20 326.3
September Quarter	6 619.9	3 500.1	7 455.9	1 056.3	2 061.1	448.5	849.2	594.1	22 585.1
Year ended September 2005	26 038.9	13 691.1	27 096.0	4 079.9	7 953.9	2 456.7	2 456.4	2 027.8	85 800.6
Year ended September 2006	26 285.0	14 217.2	27 237.5	4 269.5	8 287.6	2 464.6	2 581.3	2 108.2	87 450.9
BED OCCUPANCY RATE (%)									
2005									
June Quarter	35.4	36.0	38.9	31.8	35.5	32.1	37.0	39.5	36.4
September Quarter	39.2	37.2	46.7	32.6	39.2	27.2	46.6	44.8	40.7
December Quarter	40.6	39.7	44.2	37.1	40.2	38.2	32.1	41.3	41.0
2006									
March Quarter	40.1	41.8	40.8	38.6	40.9	49.2	28.0	40.3	40.5
June Quarter	35.6	37.1	38.4	34.5	37.2	31.5	40.2	39.9	36.9
September Quarter	37.6	37.2	45.7	35.9	38.8	26.0	47.2	44.1	40.0
Year ended September 2005	39.3	38.7	43.0	34.4	38.3	36.4	35.8	40.8	39.7
Year ended September 2006	38.4	39.0	42.3	36.5	39.3	36.2	37.0	41.5	39.6
GUEST ARRIVALS ('000)									
2005									
June Quarter	2 978.2	1 554.3	2 395.3	472.1	756.3	289.1	296.3	206.0	8 947.5
September Quarter	3 241.7	1 619.9	2 739.5	506.3	872.7	247.9	384.8	240.3	9 853.1
December Quarter	3 239.8	1 670.7	2 602.3	522.3	906.2	342.7	281.9	205.8	9 771.8
2006									
March Quarter	3 171.3	1 691.3	2 344.1	533.2	872.6	416.8	237.7	198.4	9 465.5
June Quarter	3 054.2	1 609.2	2 375.8	499.1	806.9	268.2	323.6	222.2	9 159.3
September Quarter	3 289.4	1 657.1	2 772.3	556.0	906.8	236.4	406.8	254.8	10 079.5
Year ended September 2005	12 597.5	6 472.2	9 986.1	2 017.1	3 309.8	1 321.4	1 205.0	872.0	37 781.1
Year ended September 2006	12 754.7	6 628.3	10 094.5	2 110.6	3 492.5	1 264.2	1 250.0	881.2	38 476.0

Period	New South Wales	Victoria	Queensland	South Australia	Western Australia	Tasmania	Northern Territory	Australian Capital Territory	Australia
AVERAGE LENGTH OF STAY (days)									
2005									
June Quarter	2.0	2.1	2.6	2.0	2.4	1.9	2.1	2.4	2.2
September Quarter	2.1	2.1	2.7	2.0	2.3	1.9	2.1	2.4	2.3
December Quarter	2.1	2.1	2.7	2.1	2.4	1.9	2.0	2.5	2.3
2006									
March Quarter	2.1	2.2	2.8	2.1	2.4	2.0	2.0	2.4	2.3
June Quarter	2.0	2.1	2.6	2.0	2.4	2.0	2.2	2.3	2.2
September Quarter	2.0	2.1	2.7	1.9	2.3	1.9	2.1	2.3	2.2
Year ended September 2005	2.1	2.1	2.7	2.0	2.4	1.9	2.0	2.3	2.3
Year ended September 2006	2.1	2.1	2.7	2.0	2.4	1.9	2.1	2.4	2.3
TAKINGS FROM ACCOMMODATION (\$'000)									
2005									
June Quarter	455 050	249 554	378 395	63 114	129 486	34 488	46 413	38 543	1 395 043
September Quarter	527 909	273 252	475 123	67 918	143 553	29 882	60 885	39 725	1 618 246
December Quarter	550 487	289 807	461 511	74 426	151 796	44 112	39 971	38 766	1 650 876
2006									
March Quarter	551 237	326 867	418 231	79 946	148 824	53 282	31 635	39 186	1 649 208
June Quarter	490 052	281 640	411 070	71 800	146 961	35 672	47 974	41 342	1 526 511
September Quarter	551 930	300 201	505 820	74 864	163 219	30 262	68 576	45 619	1 740 492
Year ended September 2005	2 023 387	1 072 607	1 666 943	272 780	536 275	153 954	177 701	148 002	6 051 649
Year ended September 2006	2 143 706	1 198 516	1 796 632	301 036	610 800	163 328	188 156	164 913	6 567 088
AVERAGE TAKINGS PER ROOM NIGHT OCCUPIED (\$)									
2005									
June Quarter	130.5	127.7	118.4	105.3	115.7	113.8	125.9	123.3	123.0
September Quarter	137.1	135.8	125.6	107.8	118.2	112.6	133.4	122.5	129.1
December Quarter	140.9	136.3	129.8	112.1	119.1	121.2	120.6	120.8	131.6
2006									
March Quarter	143.1	148.8	128.2	118.6	121.5	124.5	113.7	126.4	134.9
June Quarter	135.6	137.3	126.4	113.5	122.6	118.7	125.4	129.7	129.9
September Quarter	142.5	143.6	131.5	113.2	127.6	115.2	146.4	131.0	135.7
Year ended September 2005	135.7	132.3	123.0	108.3	115.6	115.1	125.3	120.5	126.8
Year ended September 2006	140.6	141.6	129.1	114.4	122.7	120.5	128.8	127.0	133.1
AVERAGE TAKINGS PER ROOM NIGHT AVAILABLE (\$)									
2005									
June Quarter	76.3	75.9	73.4	58.9	68.3	59.4	79.5	85.4	73.5
September Quarter	85.0	81.5	90.8	62.2	75.1	49.9	101.2	86.9	83.2
December Quarter	89.4	86.9	88.0	69.0	76.2	74.7	67.2	85.8	84.9
2006									
March Quarter	90.8	98.7	81.8	76.2	78.6	92.2	54.2	88.8	86.6
June Quarter	79.6	83.9	79.7	67.6	76.6	60.7	81.1	89.9	79.1
September Quarter	88.0	87.4	96.5	69.9	83.9	50.8	111.1	98.3	88.6
Year ended September 2005	84.6	81.9	81.1	63.8	70.8	66.3	75.3	82.2	79.7
Year ended September 2006	86.9	89.2	86.6	70.6	78.8	69.4	78.8	90.8	84.8

<i>Period</i>	<i>New South Wales</i>	<i>Victoria</i>	<i>Queensland</i>	<i>South Australia</i>	<i>Western Australia</i>	<i>Tasmania</i>	<i>Northern Territory</i>	<i>Australian Capital Territory</i>	<i>Australia</i>
ESTABLISHMENTS (no.)									
2005									
December Quarter	2 046	1 266	1 524	417	487	281	106	60	6 187
2006									
March Quarter	2 047	1 261	1 518	412	482	283	107	60	6 170
June Quarter	2 043	1 266	1 503	407	482	279	107	61	6 148
September Quarter	2 038	1 257	1 499	401	488	281	108	60	6 132
ROOMS (no.)									
2005									
December Quarter	74 086	41 338	61 650	13 250	22 767	7 460	np	np	232 077
2006									
March Quarter	74 287	41 648	61 261	13 182	22 120	7 525	np	np	231 569
June Quarter	74 417	41 852	60 976	13 122	22 195	np	6 636	np	231 736
September Quarter	74 337	41 996	61 200	13 071	22 350	np	6 859	np	232 377
BED SPACES (no.)									
2005									
December Quarter	204 797	112 332	189 759	36 367	62 175	21 453	np	np	659 731
2006									
March Quarter	207 470	113 875	190 662	36 306	60 782	21 783	np	np	663 549
June Quarter	207 829	114 823	190 146	35 943	60 943	np	19 480	np	664 890
September Quarter	209 227	115 426	190 744	35 856	61 415	np	20 031	np	669 031
PERSONS EMPLOYED (no.)									
2005									
December Quarter	37 242	24 650	34 438	9 067	11 180	5 519	np	np	127 513
2006									
March Quarter	36 719	24 561	33 739	8 974	11 230	5 551	np	np	126 321
June Quarter	36 822	24 448	33 715	9 067	11 366	np	3 197	np	126 436
September Quarter	37 262	24 341	34 892	9 124	11 382	np	3 543	np	128 316
ROOM NIGHTS OCCUPIED ('000)									
2005									
December Quarter	4 159.2	2 309.0	3 779.3	719.8	1 319.6	407.6	np	np	13 351.0
2006									
March Quarter	4 100.1	2 388.8	3 462.5	730.1	1 266.9	483.2	np	np	13 023.8
June Quarter	3 843.8	2 217.9	3 458.5	682.9	1 242.8	np	386.8	np	12 488.3
September Quarter	4 109.9	2 244.9	4 078.8	711.1	1 328.5	np	475.3	np	13 588.1
ROOM OCCUPANCY RATE (%)									
2005									
December Quarter	61.8	61.4	66.8	59.1	63.2	59.4	np	np	63.0
2006									
March Quarter	61.9	64.3	62.8	61.5	63.8	72.3	np	np	62.8
June Quarter	57.3	58.9	62.4	57.2	61.6	np	64.1	np	59.5
September Quarter	60.1	58.4	72.5	59.2	64.7	np	75.3	np	63.7

np not available for publication but included in totals where applicable, unless otherwise indicated

<i>Period</i>	<i>New South Wales</i>	<i>Victoria</i>	<i>Queensland</i>	<i>South Australia</i>	<i>Western Australia</i>	<i>Tasmania</i>	<i>Northern Territory</i>	<i>Australian Capital Territory</i>	<i>Australia</i>
GUEST NIGHTS OCCUPIED ('000)									
2005									
December Quarter	7 326.9	3 916.8	7 543.8	1 195.4	2 265.5	736.2	np	np	24 065.3
2006									
March Quarter	7 217.7	4 124.4	6 850.9	1 208.5	2 198.4	937.6	np	np	23 505.4
June Quarter	6 483.8	3 693.1	6 551.4	1 082.1	2 039.1	np	707.0	np	21 671.3
September Quarter	7 055.4	3 779.7	7 884.7	1 138.7	2 163.3	np	861.9	np	23 977.1
BED OCCUPANCY RATE (%)									
2005									
December Quarter	39.5	38.5	43.3	35.7	39.7	37.3	np	np	40.0
2006									
March Quarter	39.1	40.7	39.9	37.0	40.3	48.5	np	np	39.6
June Quarter	34.7	35.9	37.9	33.1	36.8	np	39.9	np	36.1
September Quarter	36.7	35.8	44.9	34.5	38.3	np	46.8	np	39.0
GUEST ARRIVALS ('000)									
2005									
December Quarter	3 522.3	1 876.3	2 809.5	575.2	948.2	391.2	np	np	10 615.6
2006									
March Quarter	3 440.6	1 897.5	2 529.8	586.6	910.8	482.1	np	np	10 288.1
June Quarter	3 296.1	1 789.4	2 574.9	546.1	847.3	np	328.1	np	9 912.1
September Quarter	3 550.3	1 827.5	2 982.9	602.8	954.6	np	415.5	np	10 856.4
AVERAGE LENGTH OF STAY (days)									
2005									
December Quarter	2.1	2.1	2.7	2.1	2.4	1.9	np	np	2.3
2006									
March Quarter	2.1	2.2	2.7	2.1	2.4	1.9	np	np	2.3
June Quarter	2.0	2.1	2.5	2.0	2.4	np	2.2	np	2.2
September Quarter	2.0	2.1	2.6	1.9	2.3	np	2.1	np	2.2
TAKINGS FROM ACCOMMODATION (\$'000)									
2005									
December Quarter	573 305	306 610	479 205	78 971	156 788	48 640	np	np	1 722 533
2006									
March Quarter	574 459	344 495	434 185	84 704	153 593	59 395	np	np	1 721 893
June Quarter	510 508	296 312	427 656	75 954	151 703	np	48 285	np	1 591 196
September Quarter	574 609	314 461	524 920	79 047	168 706	np	69 178	np	1 809 514
AVERAGE TAKINGS PER ROOM NIGHT OCCUPIED (\$)									
2005									
December Quarter	137.8	132.8	126.8	109.7	118.8	119.3	np	np	129.0
2006									
March Quarter	140.1	144.2	125.4	116.0	121.2	122.9	np	np	132.2
June Quarter	132.8	133.6	123.7	111.2	122.1	np	124.8	np	127.4
September Quarter	139.8	140.1	128.7	111.2	127.0	np	145.5	np	133.2

np not available for publication but included in totals where applicable, unless otherwise indicated

<i>Period</i>	<i>New South Wales</i>	<i>Victoria</i>	<i>Queensland</i>	<i>South Australia</i>	<i>Western Australia</i>	<i>Tasmania</i>	<i>Northern Territory</i>	<i>Australian Capital Territory</i>	<i>Australia</i>
AVERAGE TAKINGS PER ROOM NIGHT AVAILABLE (\$)									
2005									
December Quarter	85.2	81.6	84.7	64.8	75.0	70.9	np	np	81.3
2006									
March Quarter	86.7	92.7	78.8	71.4	77.4	88.9	np	np	83.0
June Quarter	76.1	78.7	77.1	63.6	75.2	np	80.0	np	75.9
September Quarter	84.0	81.8	93.3	65.8	82.1	np	109.6	np	84.8

np not available for publication but included in totals where applicable, unless otherwise indicated

Period	New South Wales	Victoria	Queensland	South Australia	Western Australia	Tasmania	Northern Territory	Australian Capital Territory	Australia
ESTABLISHMENTS (no.)									
2005									
September Quarter	460	364	265	138	180	45	49	3	1 504
December Quarter	455	366	263	137	178	45	48	3	1 495
2006									
March Quarter	449	363	262	136	177	45	48	3	1 483
June Quarter	448	359	260	136	176	45	48	3	1 475
September Quarter	445	358	260	136	172	45	48	3	1 467
ON-SITE VANS (no.)									
2005									
September Quarter	6 952	2 971	1 934	431	1 361	np	np	np	14 055
December Quarter	6 806	3 012	1 784	454	1 452	np	89	np	13 930
2006									
March Quarter	6 630	2 670	1 772	403	1 363	np	np	np	13 277
June Quarter	6 894	2 742	1 703	406	1 278	np	np	np	13 469
September Quarter	6 726	2 703	1 701	330	1 285	np	np	np	13 132
OTHER POWERED SITES (no.)									
2005									
September Quarter	41 170	32 609	19 522	12 142	15 557	np	np	np	128 427
December Quarter	41 495	33 034	19 300	11 981	15 281	np	4 286	np	128 398
2006									
March Quarter	41 498	33 585	19 222	12 027	15 321	np	np	np	128 939
June Quarter	40 632	33 201	19 352	11 917	15 164	np	np	np	127 662
September Quarter	40 211	33 302	19 332	11 838	15 118	np	np	np	127 320
UNPOWERED SITES (no.)									
2005									
September Quarter	11 246	9 615	5 866	4 185	3 352	np	np	np	38 974
December Quarter	11 373	9 615	5 727	4 452	3 367	np	2 669	np	39 231
2006									
March Quarter	11 380	9 848	5 713	4 404	3 620	np	np	np	39 714
June Quarter	11 481	9 709	5 782	4 468	3 836	np	np	np	40 035
September Quarter	11 294	9 694	5 861	4 484	3 511	np	np	np	39 506
CABINS FLATS, UNITS AND VILLAS (no.)									
2005									
September Quarter	9 779	4 813	3 955	2 278	2 520	np	np	np	25 005
December Quarter	9 739	5 043	3 983	2 240	2 489	np	949	np	25 191
2006									
March Quarter	9 594	4 967	4 054	2 292	2 612	np	np	np	25 255
June Quarter	9 635	4 912	4 116	2 316	2 574	np	np	np	25 309
September Quarter	9 574	4 935	4 238	2 299	2 589	np	np	np	25 381
TOTAL CAPACITY (no.)									
2005									
September Quarter	69 147	50 008	31 277	19 036	22 790	np	np	np	206 461
December Quarter	69 413	50 704	30 794	19 127	22 589	np	7 993	np	206 750
2006									
March Quarter	69 102	51 070	30 761	19 126	22 916	np	np	np	207 185
June Quarter	68 642	50 564	30 953	19 107	22 852	np	np	np	206 475
September Quarter	67 805	50 634	31 132	18 951	22 503	np	np	np	205 339

np not available for publication but included in totals where applicable, unless otherwise indicated

(a) Comprising establishments with 40 or more powered sites and cabins, flats, units and villas.

Period	New South Wales	Victoria	Queensland	South Australia	Western Australia	Tasmania	Northern Territory	Australian Capital Territory	Australia
PERSONS EMPLOYED (no.)									
2005									
September Quarter	2 755	1 606	1 413	768	1 112	np	np	np	8 493
December Quarter	2 929	1 757	1 372	742	1 085	np	464	np	8 689
2006									
March Quarter	2 885	1 729	1 372	751	1 082	np	np	np	8 636
June Quarter	2 775	1 597	1 404	736	1 134	np	np	np	8 496
September Quarter	2 767	1 511	1 429	775	1 138	np	np	np	8 509
SITES OCCUPIED BY LONG-TERM GUESTS (no.)									
2005									
September Quarter	6 457	3 012	5 061	963	2 875	np	np	np	19 408
December Quarter	6 467	3 111	4 744	1 023	2 710	np	500	np	19 038
2006									
March Quarter	6 447	3 146	4 855	1 059	2 706	np	np	np	19 156
June Quarter	6 240	2 908	4 874	1 047	2 918	np	np	np	18 985
September Quarter	6 184	2 736	4 972	1 062	3 023	np	np	np	18 957
OTHER SITES PERMANENTLY RESERVED (no.)									
2005									
September Quarter	19 937	14 979	1 138	2 385	1 989	np	np	np	41 358
December Quarter	19 808	15 190	1 119	2 354	1 967	np	50	np	41 405
2006									
March Quarter	19 889	14 816	963	2 252	1 861	np	np	np	40 624
June Quarter	19 463	14 790	925	2 186	1 969	np	np	np	40 240
September Quarter	19 666	15 197	1 004	2 202	1 899	np	np	np	40 912
SITE NIGHTS OCCUPIED ('000)									
2005									
September Quarter	3 322.4	2 010.3	1 740.5	565.1	1 032.8	np	np	np	9 208.7
December Quarter	3 482.0	2 205.4	1 201.1	655.6	875.6	np	160.3	np	8 790.0
2006									
March Quarter	3 623.1	2 436.1	1 032.5	736.9	848.9	np	np	np	9 032.9
June Quarter	3 287.6	2 054.0	1 351.2	627.8	953.8	np	np	np	8 729.2
September Quarter	3 270.5	1 959.6	1 705.9	564.8	1 078.1	np	np	np	9 124.9
SITE OCCUPANCY RATE (%)									
2005									
September Quarter	52.3	45.7	60.5	32.4	49.3	np	np	np	49.1
December Quarter	54.5	48.1	42.4	37.3	42.3	np	22.0	np	46.5
2006									
March Quarter	58.3	53.0	37.4	42.8	41.2	np	np	np	48.5
June Quarter	52.7	45.6	48.0	36.1	45.9	np	np	np	46.8
September Quarter	52.5	44.4	59.7	32.5	52.1	np	np	np	49.0

np not available for publication but included in totals where applicable, unless otherwise indicated

(a) Comprising establishments with 40 or more powered sites and cabins, flats, units and villas.

<i>Period</i>	<i>New South Wales</i>	<i>Victoria</i>	<i>Queensland</i>	<i>South Australia</i>	<i>Western Australia</i>	<i>Tasmania</i>	<i>Northern Territory</i>	<i>Australian Capital Territory</i>	<i>Australia</i>
TAKINGS FROM ACCOMMODATION (\$'000)									
2005									
September Quarter	52 572	25 015	42 250	11 168	23 678	np	np	np	169 549
December Quarter	68 601	32 574	29 151	14 123	21 490	np	4 896	np	175 370
2006									
March Quarter	76 700	40 057	24 147	16 699	21 627	np	np	np	189 208
June Quarter	56 011	26 584	35 126	13 256	23 472	np	np	np	168 334
September Quarter	55 972	27 461	44 969	12 152	25 903	np	np	np	182 011

np not available for publication but included in totals where applicable,
unless otherwise indicated

(a) Comprising establishments with 40 or more powered sites and cabins,
flats, units and villas.

<i>Period</i>	<i>New South Wales</i>	<i>Victoria</i>	<i>Queensland</i>	<i>South Australia</i>	<i>Western Australia</i>	<i>Tasmania</i>	<i>Northern Territory</i>	<i>Australian Capital Territory</i>	<i>Australia</i>
---------------	------------------------	-----------------	-------------------	------------------------	--------------------------	-----------------	---------------------------	-------------------------------------	------------------

ESTABLISHMENTS (no.)

2005									
September Quarter	79	46	76	9	25	1	4	—	240
December Quarter	79	46	75	9	25	1	4	—	239
2006									
March Quarter	78	44	74	9	25	1	4	—	235
June Quarter	78	44	74	9	26	1	3	—	235
September Quarter	78	43	74	8	26	1	3	—	233

ON-SITE VANS (no.)

2005									
September Quarter	1 347	461	2 035	165	347	np	np	—	4 372
December Quarter	1 210	463	1 987	157	340	np	np	—	4 173
2006									
March Quarter	1 223	442	2 072	159	342	np	np	—	4 254
June Quarter	1 261	429	2 047	159	375	np	np	—	4 287
September Quarter	1 266	429	1 992	159	377	np	np	—	4 240

OTHER POWERED SITES (no.)

2005									
September Quarter	6 058	3 784	5 074	814	2 131	np	np	—	18 224
December Quarter	6 138	3 791	4 936	814	2 067	np	np	—	18 117
2006									
March Quarter	6 009	3 675	4 768	811	2 126	np	np	—	17 764
June Quarter	5 920	3 753	4 806	802	2 135	np	np	—	17 743
September Quarter	6 006	3 690	4 737	692	2 072	np	np	—	17 524

UNPOWERED SITES (no.)

2005									
September Quarter	844	360	461	121	202	np	np	—	2 256
December Quarter	855	352	465	121	205	np	np	—	2 079
2006									
March Quarter	838	353	463	121	218	np	np	—	2 074
June Quarter	891	353	447	121	188	np	np	—	2 081
September Quarter	842	363	507	121	181	np	np	—	2 085

CABINS FLATS, UNITS AND VILLAS (no.)

2005									
September Quarter	2 137	1 279	1 717	221	602	np	np	—	6 005
December Quarter	2 172	1 381	1 703	232	673	np	np	—	6 209
2006									
March Quarter	2 219	1 369	1 736	233	608	np	np	—	6 213
June Quarter	2 275	1 320	1 785	254	604	np	np	—	6 286
September Quarter	2 208	1 293	1 814	251	674	np	np	—	6 288

— nil or rounded to zero (including null cells)

np not available for publication but included in totals where applicable, unless otherwise indicated

(a) Comprising establishments with 40 or more powered sites and cabins, flats, units and villas.

Period	New South Wales	Victoria	Queensland	South Australia	Western Australia	Tasmania	Northern Territory	Australian Capital Territory	Australia
TOTAL CAPACITY (no.)									
2005									
September Quarter	10 386	5 884	9 287	1 321	3 282	np	np	—	30 857
December Quarter	10 375	5 987	9 091	1 324	3 285	np	np	—	30 578
2006									
March Quarter	10 289	5 839	9 039	1 324	3 294	np	np	—	30 305
June Quarter	10 347	5 855	9 085	1 336	3 302	np	np	—	30 397
September Quarter	10 322	5 775	9 050	1 223	3 304	np	np	—	30 137
PERSONS EMPLOYED (no.)									
2005									
September Quarter	426	232	442	43	137	np	np	—	1 300
December Quarter	446	231	434	53	142	np	np	—	1 327
2006									
March Quarter	423	233	449	47	147	np	np	—	1 320
June Quarter	415	222	438	47	154	np	np	—	1 290
September Quarter	432	220	442	53	153	np	np	—	1 315
SITES OCCUPIED BY LONG-TERM GUESTS (no.)									
2005									
September Quarter	5 540	3 260	6 280	839	1 988	np	np	—	18 051
December Quarter	5 532	3 255	6 034	733	1 975	np	np	—	17 687
2006									
March Quarter	5 479	3 216	6 070	684	1 987	np	np	—	17 594
June Quarter	5 253	3 159	6 048	638	1 946	np	np	—	17 165
September Quarter	5 163	3 147	6 070	665	1 914	np	np	—	17 079
OTHER SITES PERMANENTLY RESERVED (no.)									
2005									
September Quarter	892	404	153	5	39	np	np	—	1 560
December Quarter	906	344	150	—	19	np	np	—	1 498
2006									
March Quarter	855	332	263	—	21	np	np	—	1 567
June Quarter	848	316	269	1	10	np	np	—	1 511
September Quarter	918	327	374	38	10	np	np	—	1 734
SITE NIGHTS OCCUPIED ('000)									
2005									
September Quarter	690.5	373.2	711.4	93.3	229.1	np	np	—	2 130.0
December Quarter	701.6	379.2	672.5	82.0	228.3	np	np	—	2 088.9
2006									
March Quarter	692.5	405.5	653.1	80.6	221.0	np	np	—	2 086.6
June Quarter	666.8	365.3	679.5	76.1	223.1	np	np	—	2 036.6
September Quarter	676.8	367.7	697.4	78.4	241.5	np	np	—	2 090.4

— nil or rounded to zero (including null cells)

np not available for publication but included in totals where applicable, unless otherwise indicated

(a) Comprising establishments with 40 or more powered sites and cabins, flats, units and villas.

<i>Period</i>	<i>New South Wales</i>	<i>Victoria</i>	<i>Queensland</i>	<i>South Australia</i>	<i>Western Australia</i>	<i>Tasmania</i>	<i>Northern Territory</i>	<i>Australian Capital Territory</i>	<i>Australia</i>
---------------	--------------------------------	-----------------	-------------------	----------------------------	------------------------------	-----------------	-------------------------------	---	------------------

SITE OCCUPANCY RATE (%)

2005									
September Quarter	72.3	69.0	83.3	76.7	75.9	np	np	—	75.0
December Quarter	73.5	69.5	80.4	67.3	75.5	np	np	—	74.4
2006									
March Quarter	74.8	77.4	80.3	67.7	74.6	np	np	—	76.6
June Quarter	70.8	68.6	82.2	62.6	74.2	np	np	—	73.6
September Quarter	71.3	69.2	83.8	69.6	79.5	np	np	—	75.4

TAKINGS FROM ACCOMMODATION (\$'000)

2005									
September Quarter	11 649	6 134	12 998	1 497	4 069	np	np	—	36 766
December Quarter	12 793	6 406	12 688	1 349	4 206	np	np	—	37 799
2006									
March Quarter	12 595	6 270	12 021	1 377	4 130	np	np	—	36 819
June Quarter	10 659	5 172	12 582	1 477	4 654	np	np	—	34 989
September Quarter	11 130	6 305	13 617	1 586	5 059	np	np	—	38 378

— nil or rounded to zero (including null cells)

np not available for publication but included in totals where applicable,
unless otherwise indicated(a) Comprising establishments with 40 or more powered sites and
cabins, flats, units and villas.

Period	New South Wales	Victoria	Queensland	South Australia	Western Australia	Tasmania	Northern Territory	Australian Capital Territory	Australia
ESTABLISHMENTS (no.)									
2005									
September Quarter	539	410	341	147	205	46	53	3	1 744
December Quarter	534	412	338	146	203	46	52	3	1 734
2006									
March Quarter	527	407	336	145	202	46	52	3	1 718
June Quarter	526	403	334	145	202	46	51	3	1 710
September Quarter	523	401	334	144	198	46	51	3	1 700
ON-SITE VANS (no.)									
2005									
September Quarter	8 299	3 432	3 969	596	1 708	np	98	np	18 427
December Quarter	8 016	3 475	3 771	611	1 792	np	np	np	18 103
2006									
March Quarter	7 853	3 112	3 844	562	1 705	292	np	np	17 531
June Quarter	8 155	3 171	3 750	565	1 653	np	133	np	17 756
September Quarter	7 992	3 132	3 693	489	1 662	np	152	np	17 372
OTHER POWERED SITES (no.)									
2005									
September Quarter	47 228	36 393	24 596	12 956	17 688	np	4 585	np	146 651
December Quarter	47 633	36 825	24 236	12 795	17 348	np	np	np	146 515
2006									
March Quarter	47 507	37 260	23 990	12 838	17 447	2 809	np	np	146 703
June Quarter	46 552	36 954	24 158	12 719	17 299	np	4 513	np	145 405
September Quarter	46 217	36 992	24 069	12 530	17 190	np	4 526	np	144 844
UNPOWERED SITES (no.)									
2005									
September Quarter	12 090	9 975	6 327	4 306	3 554	np	2 960	np	41 230
December Quarter	12 228	9 967	6 192	4 573	3 572	np	np	np	41 310
2006									
March Quarter	12 218	10 201	6 176	4 525	3 838	1 727	np	np	41 788
June Quarter	12 372	10 062	6 229	4 589	4 024	np	2 714	np	42 116
September Quarter	12 136	10 057	6 368	4 605	3 692	np	2 635	np	41 591
CABINS FLATS, UNITS AND VILLAS (no.)									
2005									
September Quarter	11 916	6 092	5 672	2 499	3 122	np	960	np	31 010
December Quarter	11 911	6 424	5 686	2 472	3 162	np	np	np	31 400
2006									
March Quarter	11 813	6 336	5 790	2 525	3 220	671	np	np	31 468
June Quarter	11 910	6 232	5 901	2 570	3 178	np	1 026	np	31 595
September Quarter	11 782	6 228	6 052	2 550	3 263	np	1 007	np	31 669

np not available for publication but included in totals where applicable, unless otherwise indicated

(a) Comprising establishments with 40 or more powered sites and cabins, flats, units and villas.

Period	New South Wales	Victoria	Queensland	South Australia	Western Australia	Tasmania	Northern Territory	Australian Capital Territory	Australia
TOTAL CAPACITY (no.)									
2005									
September Quarter	79 533	55 892	40 564	20 357	26 072	np	8 603	np	237 318
December Quarter	79 788	56 691	39 885	20 451	25 874	np	np	np	237 328
2006									
March Quarter	79 391	56 909	39 800	20 450	26 210	5 499	np	np	237 490
June Quarter	78 989	56 419	40 038	20 443	26 154	np	8 386	np	236 872
September Quarter	78 127	56 409	40 182	20 174	25 807	np	8 320	np	235 476
PERSONS EMPLOYED (no.)									
2005									
September Quarter	3 181	1 838	1 855	811	1 249	np	520	np	9 793
December Quarter	3 375	1 988	1 806	795	1 227	np	np	np	10 016
2006									
March Quarter	3 308	1 962	1 821	798	1 229	270	np	np	9 956
June Quarter	3 190	1 819	1 842	783	1 288	np	541	np	9 786
September Quarter	3 199	1 731	1 871	828	1 291	np	574	np	9 824
SITES OCCUPIED BY LONG-TERM GUESTS (no.)									
2005									
September Quarter	11 997	6 272	11 341	1 802	4 863	np	701	np	37 459
December Quarter	11 999	6 366	10 778	1 756	4 685	np	np	np	36 725
2006									
March Quarter	11 926	6 362	10 925	1 743	4 693	290	np	np	36 750
June Quarter	11 493	6 067	10 922	1 685	4 864	np	676	np	36 150
September Quarter	11 347	5 883	11 042	1 727	4 937	np	654	np	36 036
OTHER SITES PERMANENTLY RESERVED (no.)									
2005									
September Quarter	20 829	15 383	1 291	2 390	2 028	np	22	np	42 918
December Quarter	20 714	15 534	1 269	2 354	1 986	np	np	np	42 903
2006									
March Quarter	20 744	15 148	1 226	2 252	1 882	919	np	np	42 191
June Quarter	20 311	15 106	1 194	2 187	1 979	np	8	np	41 751
September Quarter	20 584	15 524	1 378	2 240	1 909	np	17	np	42 646
SITE NIGHTS OCCUPIED ('000)									
2005									
September Quarter	4 012.8	2 383.6	2 451.9	658.4	1 262.0	np	402.0	np	11 338.7
December Quarter	4 183.6	2 584.5	1 873.6	737.6	1 103.9	np	np	np	10 878.9
2006									
March Quarter	4 315.5	2 841.6	1 685.6	817.5	1 069.9	246.6	np	np	11 119.5
June Quarter	3 954.4	2 419.3	2 030.8	703.9	1 176.8	np	288.7	np	10 765.8
September Quarter	3 947.3	2 327.3	2 403.3	643.1	1 319.6	np	401.6	np	11 215.3

np not available for publication but included in totals where applicable, unless otherwise indicated

(a) Comprising establishments with 40 or more powered sites and cabins, flats, units and villas.

<i>Period</i>	<i>New South Wales</i>	<i>Victoria</i>	<i>Queensland</i>	<i>South Australia</i>	<i>Western Australia</i>	<i>Tasmania</i>	<i>Northern Territory</i>	<i>Australian Capital Territory</i>	<i>Australia</i>
---------------	--------------------------------	-----------------	-------------------	----------------------------	------------------------------	-----------------	-------------------------------	---	------------------

SITE OCCUPANCY RATE (%)

2005									
September Quarter	54.9	48.3	65.7	35.3	52.6	np	50.8	np	52.5
December Quarter	57.0	50.4	51.1	39.3	46.6	np	np	np	50.1
2006									
March Quarter	60.4	55.5	47.1	44.4	45.4	50.3	np	np	52.1
June Quarter	55.1	48.0	55.8	37.8	49.4	np	37.8	np	50.2
September Quarter	55.0	47.1	65.1	34.7	55.6	np	52.5	np	52.5

TAKINGS FROM ACCOMMODATION (\$'000)

2005									
September Quarter	64 221	31 149	55 248	12 665	27 746	np	12 286	np	206 315
December Quarter	81 394	38 980	41 839	15 472	25 696	np	np	np	213 168
2006									
March Quarter	89 294	46 328	36 168	18 076	25 758	6 254	np	np	226 027
June Quarter	66 670	31 756	47 708	14 733	28 125	np	9 974	np	203 323
September Quarter	67 102	33 766	58 586	13 738	30 962	np	12 865	np	220 388

np not available for publication but included in totals where applicable, unless otherwise indicated

(a) Comprising establishments with 40 or more powered sites and cabins, flats, units and villas.

<i>Period</i>	<i>New South Wales</i>	<i>Victoria</i>	<i>Queensland</i>	<i>South Australia</i>	<i>Western Australia</i>	<i>Tasmania</i>	<i>Northern Territory</i>	<i>Australian Capital Territory</i>	<i>Australia</i>
---------------	------------------------	-----------------	-------------------	------------------------	--------------------------	-----------------	---------------------------	-------------------------------------	------------------

LETTING ENTITIES (a) (no.)

2005									
September Quarter	98	17	44	8	2	1	—	—	170
December Quarter	97	17	43	8	2	1	—	—	168
2006									
March Quarter	98	16	41	8	2	1	—	—	166
June Quarter	97	16	40	8	2	1	—	—	164
September Quarter	97	16	40	8	2	1	—	—	164

SINGLE BEDROOM HOLIDAY FLATS, UNITS AND HOUSES (no.)

2005									
September Quarter	406	32	153	np	np	np	—	—	606
December Quarter	393	37	159	np	np	np	—	—	603
2006									
March Quarter	392	100	158	np	np	np	—	—	664
June Quarter	392	51	145	9	np	np	—	—	601
September Quarter	405	54	163	np	np	np	—	—	636

MULTIPLE BEDROOM HOLIDAY FLATS, UNITS AND HOUSES (no.)

2005									
September Quarter	7 559	1 643	3 029	np	np	np	—	—	13 123
December Quarter	7 581	1 790	3 081	np	np	np	—	—	13 354
2006									
March Quarter	7 808	1 761	3 002	np	np	np	—	—	13 490
June Quarter	7 542	1 715	2 992	736	np	np	—	—	13 141
September Quarter	7 429	1 667	2 877	np	np	np	—	—	12 865

TOTAL HOLIDAY FLATS, UNITS AND HOUSES (no.)

2005									
September Quarter	7 965	1 675	3 182	np	np	np	—	—	13 729
December Quarter	7 974	1 827	3 240	np	np	np	—	—	13 957
2006									
March Quarter	8 200	1 861	3 160	np	np	np	—	—	14 154
June Quarter	7 934	1 766	3 137	745	np	np	—	—	13 742
September Quarter	7 834	1 721	3 040	np	np	np	—	—	13 501

BED SPACES (no.)

2005									
September Quarter	42 309	11 864	14 843	np	np	np	—	—	74 671
December Quarter	42 387	12 487	14 955	np	np	np	—	—	75 846
2006									
March Quarter	43 543	11 725	14 985	np	np	np	—	—	76 305
June Quarter	42 353	12 106	14 698	5 263	np	np	—	—	75 441
September Quarter	42 764	12 140	14 571	np	np	np	—	—	75 757

— nil or rounded to zero (including null cells)

np not available for publication but included in totals where applicable, unless otherwise indicated

(a) The number of owners, managers or real estate agents with 15 or more self-contained units.

Period	New South Wales	Victoria	Queensland	South Australia	Western Australia	Tasmania	Northern Territory	Australian Capital Territory	Australia
UNIT NIGHTS OCCUPIED ('000)									
2005									
September Quarter	201.3	10.4	164.3	np	np	np	—	—	392.0
December Quarter	248.7	11.9	159.1	np	np	np	—	—	437.7
2006									
March Quarter	279.2	21.7	159.2	np	np	np	—	—	492.6
June Quarter	177.7	9.3	111.2	np	np	np	—	—	313.1
September Quarter	172.9	8.5	145.8	np	np	np	—	—	339.5
UNIT OCCUPANCY RATE (%)									
2005									
September Quarter	27.5	6.7	56.1	np	np	np	—	—	31.0
December Quarter	33.9	7.1	53.4	np	np	np	—	—	34.1
2006									
March Quarter	37.8	13.0	56.0	np	np	np	—	—	38.7
June Quarter	24.6	5.8	39.0	np	np	np	—	—	25.0
September Quarter	24.0	5.4	54.2	np	np	np	—	—	27.6
UNIT LETTINGS ('000)									
2005									
September Quarter	32.9	2.2	27.8	np	np	np	—	—	66.4
December Quarter	42.1	2.9	36.0	np	np	np	—	—	84.0
2006									
March Quarter	43.5	4.9	28.2	np	np	np	—	—	81.7
June Quarter	31.1	3.4	22.2	np	np	np	—	—	59.5
September Quarter	28.5	4.5	25.8	np	np	np	—	—	61.3
AVERAGE LENGTH OF STAY (days)									
2005									
September Quarter	6.1	4.6	5.9	np	np	np	—	—	5.9
December Quarter	5.9	4.2	4.4	np	np	np	—	—	5.2
2006									
March Quarter	6.4	4.5	5.7	np	np	np	—	—	6.0
June Quarter	5.7	2.7	5.0	np	np	np	—	—	5.3
September Quarter	6.1	1.9	5.7	np	np	np	—	—	5.5
TAKINGS FROM ACCOMMODATION (\$'000)									
2005									
September Quarter	17 168	1 625	13 388	np	np	np	—	—	33 668
December Quarter	26 633	1 340	15 289	np	np	np	—	—	45 320
2006									
March Quarter	31 269	3 166	14 313	np	np	np	—	—	52 386
June Quarter	14 844	998	9 847	np	np	np	—	—	27 187
September Quarter	15 506	1 573	13 782	np	np	np	—	—	32 234

— nil or rounded to zero (including null cells)

np not available for publication but included in totals where applicable, unless otherwise indicated

HOLIDAY FLATS, UNITS AND HOUSES, Other letting entities

<i>Period</i>	<i>New South Wales</i>	<i>Victoria</i>	<i>Queensland</i>	<i>South Australia</i>	<i>Western Australia</i>	<i>Tasmania</i>	<i>Northern Territory</i>	<i>Australian Capital Territory</i>	<i>Australia</i>
---------------	--------------------------------	-----------------	-------------------	----------------------------	------------------------------	-----------------	-------------------------------	---	------------------

LETTING ENTITIES (a) (no.)

2005									
September Quarter	55	17	302	7	19	7	2	3	412
December Quarter	55	17	304	7	20	7	2	3	415
2006									
March Quarter	56	17	306	7	20	7	2	3	418
June Quarter	56	17	303	7	20	7	2	3	415
September Quarter	56	17	306	7	20	7	2	3	418

SINGLE BEDROOM HOLIDAY FLATS, UNITS AND HOUSES (no.)

2005									
September Quarter	404	254	2 945	np	np	np	np	np	4 159
December Quarter	408	253	2 912	np	np	np	np	np	4 113
2006									
March Quarter	447	250	3 107	np	np	np	np	np	4 383
June Quarter	453	263	2 896	98	np	np	np	59	4 190
September Quarter	416	277	2 800	np	np	np	np	np	4 097

MULTIPLE BEDROOM HOLIDAY FLATS, UNITS AND HOUSES (no.)

2005									
September Quarter	1 040	557	7 385	np	np	np	np	np	10 077
December Quarter	1 029	559	7 591	np	np	np	np	np	10 322
2006									
March Quarter	1 047	566	7 457	np	np	np	np	np	10 177
June Quarter	1 035	558	7 588	149	np	np	np	110	10 349
September Quarter	1 050	562	7 564	np	np	np	np	np	10 343

TOTAL HOLIDAY FLATS, UNITS AND HOUSES (no.)

2005									
September Quarter	1 444	811	10 330	np	np	np	np	np	14 236
December Quarter	1 437	812	10 503	np	np	np	np	np	14 435
2006									
March Quarter	1 494	816	10 564	np	np	np	np	np	14 560
June Quarter	1 488	821	10 484	247	np	np	np	169	14 539
September Quarter	1 466	839	10 364	np	np	np	np	np	14 440

BED SPACES (no.)

2005									
September Quarter	6 229	3 346	39 870	np	np	np	np	np	57 397
December Quarter	6 148	3 383	40 824	np	np	np	np	np	58 331
2006									
March Quarter	6 477	3 424	40 572	np	np	np	np	np	58 849
June Quarter	6 458	3 423	40 175	953	np	np	np	976	58 745
September Quarter	6 287	3 462	40 356	np	np	np	np	np	58 780

np not available for publication but included in totals where applicable, unless otherwise indicated

(a) The number of owners, managers or real estate agents with 15 or more self-contained units.

Period	New South Wales	Victoria	Queensland	South Australia	Western Australia	Tasmania	Northern Territory	Australian Capital Territory	Australia
PERSONS EMPLOYED (no.)									
2005									
September Quarter	541	235	1 413	np	np	np	np	np	2 599
December Quarter	543	230	1 448	np	np	np	np	np	2 650
2006									
March Quarter	454	216	1 308	np	np	np	np	np	2 402
June Quarter	495	228	1 263	55	np	np	np	39	2 395
September Quarter	508	231	1 333	np	np	np	np	np	2 535
UNIT NIGHTS OCCUPIED ('000)									
2005									
September Quarter	67.8	45.2	707.3	np	np	np	np	np	919.0
December Quarter	75.5	42.0	676.9	np	np	np	np	np	905.4
2006									
March Quarter	86.1	42.0	619.8	np	np	np	np	np	858.2
June Quarter	62.6	38.1	530.9	np	np	np	np	np	728.1
September Quarter	67.3	45.0	691.8	np	np	np	np	np	899.0
UNIT OCCUPANCY RATE (%)									
2005									
September Quarter	52.0	60.5	74.4	np	np	np	np	np	70.3
December Quarter	57.1	62.5	70.1	np	np	np	np	np	68.6
2006									
March Quarter	64.0	61.1	65.2	np	np	np	np	np	65.7
June Quarter	47.1	51.0	55.7	np	np	np	np	np	55.1
September Quarter	50.8	58.4	72.6	np	np	np	np	np	67.8
UNIT LETTINGS ('000)									
2005									
September Quarter	22.0	10.6	205.8	np	np	np	np	np	271.3
December Quarter	27.5	10.9	223.5	np	np	np	np	np	296.4
2006									
March Quarter	29.8	9.7	216.2	np	np	np	np	np	287.0
June Quarter	23.1	10.0	199.8	np	np	np	np	np	259.8
September Quarter	34.0	10.7	218.7	np	np	np	np	np	299.2
AVERAGE LENGTH OF STAY (days)									
2005									
September Quarter	3.1	4.3	3.4	np	np	np	np	np	3.4
December Quarter	2.7	3.8	3.0	np	np	np	np	np	3.1
2006									
March Quarter	2.9	4.3	2.9	np	np	np	np	np	3.0
June Quarter	2.7	3.8	2.7	np	np	np	np	np	2.8
September Quarter	2.0	4.2	3.2	np	np	np	np	np	3.0
TAKINGS FROM ACCOMMODATION (\$'000)									
2005									
September Quarter	9 368	6 115	77 796	np	np	np	np	np	102 317
December Quarter	10 179	5 396	79 248	np	np	np	np	np	105 436
2006									
March Quarter	12 227	5 562	74 633	np	np	np	np	np	103 799
June Quarter	7 646	4 741	58 738	np	np	np	np	np	81 009
September Quarter	9 802	6 903	81 278	np	np	np	np	np	107 934

np not available for publication but included in totals where applicable, unless otherwise indicated

HOLIDAY FLATS, UNITS AND HOUSES, Total

Period	New South Wales	Victoria	Queensland	South Australia	Western Australia	Tasmania	Northern Territory	Australian Capital Territory	Australia
--------	-----------------	----------	------------	-----------------	-------------------	----------	--------------------	------------------------------	-----------

LETTING ENTITIES (a) (no.)

2005									
September Quarter	153	34	346	15	21	8	2	3	582
December Quarter	152	34	347	15	22	8	2	3	583
2006									
March Quarter	154	33	347	15	22	8	2	3	584
June Quarter	153	33	343	15	22	8	2	3	579
September Quarter	153	33	346	15	22	8	2	3	582

SINGLE BEDROOM HOLIDAY FLATS, UNITS AND HOUSES (no.)

2005									
September Quarter	810	286	3 098	112	322	48	np	np	4 765
December Quarter	801	290	3 071	106	313	46	np	np	4 716
2006									
March Quarter	839	350	3 265	106	308	46	np	np	5 047
June Quarter	845	314	3 041	107	345	50	np	np	4 791
September Quarter	821	331	2 963	107	374	46	np	np	4 733

MULTIPLE BEDROOM HOLIDAY FLATS, UNITS AND HOUSES (no.)

2005									
September Quarter	8 599	2 200	10 414	865	817	141	np	np	23 200
December Quarter	8 610	2 349	10 672	891	846	144	np	np	23 676
2006									
March Quarter	8 855	2 327	10 459	910	852	144	np	np	23 667
June Quarter	8 577	2 273	10 580	885	870	141	np	np	23 490
September Quarter	8 479	2 229	10 441	872	880	144	np	np	23 208

TOTAL HOLIDAY FLATS, UNITS AND HOUSES (no.)

2005									
September Quarter	9 409	2 486	13 512	977	1 139	189	np	np	27 965
December Quarter	9 411	2 639	13 743	997	1 159	190	np	np	28 392
2006									
March Quarter	9 694	2 677	13 724	1 016	1 160	190	np	np	28 714
June Quarter	9 422	2 587	13 621	992	1 215	191	np	np	28 281
September Quarter	9 300	2 560	13 404	979	1 254	190	np	np	27 941

BED SPACES (no.)

2005									
September Quarter	48 538	15 210	54 713	5 581	6 164	823	np	np	132 068
December Quarter	48 535	15 870	55 779	5 935	6 125	894	np	np	134 177
2006									
March Quarter	50 020	15 149	55 557	5 973	6 230	894	np	np	135 154
June Quarter	48 811	15 529	54 873	6 216	6 522	904	np	np	134 186
September Quarter	49 051	15 602	54 927	6 166	6 564	890	np	np	134 537

UNIT NIGHTS OCCUPIED ('000)

2005									
September Quarter	269.1	55.6	871.6	23.1	63.6	7.7	np	np	1 310.9
December Quarter	324.2	53.9	836.0	27.5	74.4	10.0	np	np	1 343.1
2006									
March Quarter	365.3	63.7	779.0	42.3	69.4	12.9	np	np	1 350.8
June Quarter	240.4	47.5	642.2	22.6	62.8	7.2	np	np	1 041.2
September Quarter	240.2	53.6	837.5	20.1	60.3	6.1	np	np	1 238.5

np not available for publication but included in totals where applicable, unless otherwise indicated

(a) The number of owners, managers or real estate agents with 15 or more self-contained units.

<i>Period</i>	<i>New South Wales</i>	<i>Victoria</i>	<i>Queensland</i>	<i>South Australia</i>	<i>Western Australia</i>	<i>Tasmania</i>	<i>Northern Territory</i>	<i>Australian Capital Territory</i>	<i>Australia</i>
UNIT OCCUPANCY RATE (%)									
2005									
September Quarter	31.2	24.3	70.1	25.7	60.7	44.3	np	np	51.0
December Quarter	37.4	22.9	66.2	30.0	69.7	57.1	np	np	51.6
2006									
March Quarter	41.9	27.0	63.1	46.2	66.5	75.7	np	np	52.4
June Quarter	28.1	20.2	51.8	25.0	56.8	41.2	np	np	40.5
September Quarter	28.2	22.7	68.5	22.3	52.3	34.9	np	np	48.4
UNIT LETTINGS ('000)									
2005									
September Quarter	54.9	12.8	233.6	6.9	20.4	3.9	np	np	337.7
December Quarter	69.5	13.8	259.5	6.0	22.1	5.3	np	np	380.4
2006									
March Quarter	73.3	14.6	244.3	7.9	18.6	6.2	np	np	368.7
June Quarter	54.2	13.4	222.0	6.0	16.0	2.7	np	np	319.3
September Quarter	62.6	15.2	244.5	5.5	23.9	3.1	np	np	360.5
AVERAGE LENGTH OF STAY (days)									
2005									
September Quarter	4.9	4.3	3.7	3.3	3.1	2.0	np	np	3.9
December Quarter	4.7	3.9	3.2	4.6	3.4	1.9	np	np	3.5
2006									
March Quarter	5.0	4.4	3.2	5.4	3.7	2.1	np	np	3.7
June Quarter	4.4	3.5	2.9	3.8	3.9	2.6	np	np	3.3
September Quarter	3.8	3.5	3.4	3.6	2.5	2.0	np	np	3.4
TAKINGS FROM ACCOMMODATION (\$'000)									
2005									
September Quarter	26 536	7 741	91 184	2 190	5 265	645	np	np	135 985
December Quarter	36 811	6 736	94 538	2 915	7 106	889	np	np	150 755
2006									
March Quarter	43 495	8 728	88 946	4 769	7 016	1 315	np	np	156 184
June Quarter	22 490	5 739	68 585	2 313	6 299	651	np	np	108 196
September Quarter	25 308	8 476	95 061	2 046	6 231	531	np	np	140 168

np not available for publication but included in totals where applicable, unless otherwise indicated

<i>Period</i>	<i>New South Wales</i>	<i>Victoria</i>	<i>Queensland</i>	<i>South Australia</i>	<i>Western Australia</i>	<i>Tasmania</i>	<i>Northern Territory</i>	<i>Australian Capital Territory</i>	<i>Australia</i>
---------------	--------------------------------	-----------------	-------------------	----------------------------	------------------------------	-----------------	-------------------------------	---	------------------

ESTABLISHMENTS (no.)

2005									
September Quarter	104	67	131	27	67	24	27	5	452
December Quarter	105	70	130	29	67	24	26	5	456
2006									
March Quarter	107	70	127	27	65	24	26	5	451
June Quarter	105	69	123	27	65	22	26	5	442
September Quarter	105	67	118	27	66	22	23	5	433

BED SPACES (no.)

2005									
September Quarter	11 297	8 369	14 671	2 354	5 161	1 919	3 650	805	48 226
December Quarter	11 436	8 486	14 666	2 420	5 184	1 816	3 565	759	48 332
2006									
March Quarter	11 669	8 923	13 718	2 337	4 984	1 888	3 571	952	48 042
June Quarter	11 806	8 791	13 580	2 386	5 003	1 626	3 587	953	47 732
September Quarter	11 749	8 837	13 288	2 400	5 305	1 650	3 202	974	47 405

PERSONS EMPLOYED (no.)

2005									
September Quarter	674	442	1 302	103	321	149	319	94	3 404
December Quarter	721	463	1 231	107	304	161	252	98	3 337
2006									
March Quarter	716	487	1 145	113	322	156	260	82	3 281
June Quarter	714	523	1 193	124	289	133	222	79	3 277
September Quarter	727	472	1 185	114	312	129	227	84	3 250

GUEST NIGHTS OCCUPIED (no.)

2005									
September Quarter	512 151	234 277	749 202	66 323	193 813	19 672	193 296	41 361	2 010 095
December Quarter	615 328	327 039	696 058	85 871	208 494	37 572	112 451	27 400	2 110 213
2006									
March Quarter	670 795	414 230	699 028	88 683	253 170	64 593	97 204	36 974	2 324 677
June Quarter	498 803	266 966	665 277	66 114	224 322	27 088	139 612	39 335	1 927 517
September Quarter	511 916	259 589	714 807	63 126	224 526	14 258	190 182	53 242	2 031 646

BED OCCUPANCY RATE (%)

2005									
September Quarter	49.3	30.8	55.8	30.6	40.8	11.4	57.6	55.8	45.5
December Quarter	58.5	42.5	51.6	38.6	43.7	22.5	34.3	39.2	47.6
2006									
March Quarter	64.2	52.6	56.6	42.2	56.4	38.0	30.7	43.2	54.1
June Quarter	46.6	34.0	53.9	30.4	49.4	18.3	42.8	45.4	44.6
September Quarter	47.4	32.4	58.8	29.6	46.2	9.4	64.6	59.4	46.9

GUEST ARRIVALS (no.)

2005									
September Quarter	193 785	70 814	309 562	24 297	62 200	9 267	81 805	18 810	770 540
December Quarter	228 104	98 806	300 366	29 433	76 148	20 563	53 028	15 593	822 041
2006									
March Quarter	235 359	129 114	268 987	29 779	82 486	30 759	41 839	25 149	843 472
June Quarter	158 421	78 558	272 351	24 645	64 774	15 492	68 434	18 938	701 613
September Quarter	192 067	78 822	278 488	25 587	68 647	8 800	90 765	22 186	765 362

(a) Comprising establishments with 25 or more bed spaces.

<i>Period</i>	<i>New South Wales</i>	<i>Victoria</i>	<i>Queensland</i>	<i>South Australia</i>	<i>Western Australia</i>	<i>Tasmania</i>	<i>Northern Territory</i>	<i>Australian Capital Territory</i>	<i>Australia</i>
---------------	--------------------------------	-----------------	-------------------	----------------------------	------------------------------	-----------------	-------------------------------	---	------------------

AVERAGE LENGTH OF STAY (*days*)

2005									
September Quarter	2.6	3.3	2.4	2.7	3.1	2.1	2.4	2.2	2.6
December Quarter	2.7	3.3	2.3	2.9	2.7	1.8	2.1	1.8	2.6
2006									
March Quarter	2.9	3.2	2.6	3.0	3.1	2.1	2.3	1.5	2.8
June Quarter	3.1	3.4	2.4	2.7	3.5	1.7	2.0	2.1	2.7
September Quarter	2.7	3.3	2.6	2.5	3.3	1.6	2.1	2.4	2.7

TAKINGS FROM ACCOMMODATION (\$'000)

2005									
September Quarter	13 087	6 124	16 075	1 192	3 898	384	4 555	1 013	46 328
December Quarter	16 707	8 150	15 035	1 634	4 337	772	2 529	730	49 893
2006									
March Quarter	17 761	10 423	13 661	1 813	5 403	1 205	2 076	994	53 337
June Quarter	12 954	6 907	14 272	1 314	4 748	506	3 351	1 084	45 136
September Quarter	13 748	6 925	15 937	1 263	4 952	287	4 572	1 471	49 155

(a) Comprising establishments with 25 or more bed spaces.

EXPLANATORY NOTES

INTRODUCTION

1 This publication presents data from the quarterly Survey of Tourist Accommodation (STA). The STA is a mailout collection that completely enumerates all in-scope accommodation establishments within Australia.

SCOPE

2 From March quarter 2005, the scope of the STA comprises the following categories of establishments:

- licensed hotels and resorts with facilities and 5 or more rooms
- motels, private hotels and guest houses with facilities and 5 or more rooms
- serviced apartments with 5 or more units
- caravan parks with 40 or more powered sites
- holiday flats, units and houses of letting entities with 15 or more rooms or units
- visitor hostels with 25 or more bed spaces.

3 With the exception of caravan parks, these establishments provide predominantly short-term non-residential accommodation, i.e. accommodation which is not leased, and which is provided to guests who would generally stay for periods of less than two months. Some of these establishments also provide long-term residential accommodation. The amount of such activity is considered to be insignificant and is included in the data presented in this publication.

4 Caravan parks provide either short-term or long-term accommodation. If a caravan park has the majority of sites occupied by paying guests who have stayed continuously for two months or more during the survey period, the caravan park is classified as long-term. Data for caravan parks are presented by short-term and long-term in this publication.

5 Previous to March quarter 2005, the scope of the STA comprised:

- licensed hotels and resorts with facilities and 15 or more rooms
- motels, private hotels and guest houses with facilities and 15 or more rooms
- serviced apartments with 15 or more units.

6 For the four quarters of 2000 and 2003, the scope of the STA was expanded to include:

- caravan parks with 40 or more powered sites
- holiday flats, units and houses of letting entities with 15 or more rooms or units
- visitor hostels with 25 or more bed spaces.

COVERAGE

7 The main source of coverage is from the Australian Automobile Association through AAA Tourism Pty Ltd. This is supplemented by notification of new tourism developments and their likely opening dates in selected guides, major tourism journals and periodicals and newspapers. Periodic comparison with lists of accommodation establishments provided by the various tourism organisations and industry associations is also undertaken.

TAKINGS FROM ACCOMMODATION

8 From 1 July 2000, takings from accommodation include gross revenue from the provision of accommodation, including GST. Takings from meals are excluded. Where businesses are unable to provide the data inclusive of GST, it is automatically adjusted by the ABS prior to aggregation and release in output.

STAR GRADING

9 Star grade classifications of establishments are continuously revised by AAA Tourism Pty Ltd. This should be taken into account when making comparisons over time. Any queries regarding the star grading process should be directed to AAA Tourism Pty Ltd on (03) 8601 2200 or email enquiries@aaatourism.com.au.

10 Data by star grade for states and territories are no longer presented in this publication. These data are included in the data cubes that accompany this publication: *Tourist Accommodation, Small Area Data* (cat. no. 8635.0.55.002 for national data and cat. no. 8635.1.55.001 – 8635.8.55.001 for state/territory data).

EXPLANATORY NOTES *continued*

STATISTICAL GEOGRAPHY

11 Small area statistics for 2006 are classified to the Australian Standard Geographical Classification (ASGC), 2005 Edition (cat. no. 1216.0). Data are coded to the statistical local area (SLA) level.

12 These SLA data are aggregated to tourism regions as defined by relevant state and territory tourism organisations. Tourism regions are reviewed annually and are subject to boundary and name changes. Where changes have occurred care should be taken when making comparisons with previously published data at this level.

13 Data by tourism regions are no longer presented in this publication. Small area data are provided in the data cubes that accompany this publication: *Tourist Accommodation, Small Area Data* (cat. no. 8635.0.55.002 for national data and cat. no. 8635.1.55.001 – 8635.8.55.001 for state/territory data).

14 Details of SLAs, the composition of tourism regions and maps of tourism regions are provided in the ABS publication *Tourism Region Maps and Concordance Files, Australia* (cat. no. 9503.0.55.001) available from the ABS web site <www.abs.gov.au>.

DATA QUALITY

15 The survey does not have a sample component and the data are not subject to sampling variability. However, other inaccuracies collectively referred to as non-sampling error may affect the data. These non-sampling errors may arise from a number of sources, including:

- errors in the reporting of data by providers
- errors in the process of capturing data
- imputation for missing data
- definition and classification errors
- incomplete coverage.

16 Every effort has been made to reduce non-sampling error to a minimum by careful design and testing of questionnaires, and efficient operating procedures and systems used to compile statistics.

Response rates

17 The September quarter 2006 response rates were:

RESPONSE RATES

	September Qtr 2006
Activity	%
Licenced hotels with facilities	
with 5 to 14 rooms	76.5
with 15 or more rooms	88.6
with 5 or more rooms	84.3
Motels and guest houses	
with 5 to 14 rooms	84.9
with 15 or more rooms	89.3
with 5 or more rooms	87.9
Serviced apartments	
with 5 to 14 rooms	88.0
with 15 or more rooms	93.6
with 5 or more rooms	92.0
Hotels, motels and serviced apartments	
with 5 to 14 rooms	88.0
with 15 or more rooms	90.1
with 5 or more rooms	88.0
Caravan parks	90.9
Holiday flats, units and houses	90.2
Visitor hostels	91.5

EXPLANATORY NOTES *continued*

Imputation rates

18 Missing data items are replaced by imputed values based on reported data. Average quarterly movements are applied to previously reported data for each non-responding unit to estimate values for missing data items. Only if previously reported data are not available, then data from a similar unit is used as a 'donor' for the missing data items. (Note that donor imputation was often used for non-responding units for hotels, motels and serviced apartments with 5 to 14 rooms as previous data was usually unavailable.)

19 The September quarter 2006 imputation rates were:

IMPUTATION RATES

Activity	Nights occupied(a)	Takings from accommodation
	%	%
Licensed hotels with facilities		
with 5 to 14 rooms	21.9	21.6
with 15 or more rooms	3.4	2.8
with 5 or more rooms	3.9	3.0
Motels and guest houses		
with 5 to 14 rooms	13.7	13.5
with 15 or more rooms	8.4	7.7
with 5 or more rooms	8.9	8.2
Serviced apartments		
with 5 to 14 rooms	11.9	10.6
with 15 or more rooms	3.8	3.3
with 5 or more rooms	4.2	3.5
Hotels, motels and serviced apartments		
with 5 to 14 rooms	15.0	13.9
with 15 or more rooms	5.3	4.2
with 5 or more rooms	5.8	4.6
Caravan parks	7.3	7.0
Holiday flats, units and houses	9.1	9.1
Visitor hostels	8.6	7.9

(a) (a) Based on room nights for hotels, motels and serviced apartments; site nights for caravan parks; unit nights for holiday flats, units and houses; and guest nights for visitor hostels.

BREAK IN TIME SERIES

20 In June quarter 2003, the ABS identified 132 licensed hotels with facilities, motels and guest houses and serviced apartments with 15 or more rooms which had been operating for a number of quarters but were not on the STA frame. These additional establishments were included in the STA from June quarter 2003.

21 The ABS also identified 74 caravan parks which were operating in the March quarter 2003 but were not on the STA frame. These caravan parks were included in the June, September and December quarter 2003 data, but not in the March quarter 2003 data.

22 The addition of these establishments resulted in a break in time series between March and June quarters 2003. The impact of the break in time series for hotels, motels and serviced apartments is explained in Appendix 1, *Tourist Accommodation, Australia, December quarter 2003* (cat. no. 8635.0). The impact of the break in series for caravan parks is explained in the Appendix of *Tourist Accommodation, Australia, Expanded Scope Collection, Year ended 31 December quarter 2003* (cat. no. 8635.0.55.001). Particular care needs to be taken for all calculations of percentage changes that cross the break in series.

EXPLANATORY NOTES *continued*

SEASONAL ADJUSTMENT

23 Seasonal adjustment is a means of removing the estimated effects of normal seasonal variation from the original time series so that the effect of other influences on the series may be more clearly recognised. Seasonal adjustment procedures do not aim to remove the irregular or non-seasonal influences which may be present in any particular quarter. Irregular influences that are highly volatile can make it difficult to interpret the movement of the series even after adjustment for seasonal variation, and cannot be assumed to indicate changes in the trend.

24 The way in which seasonally adjusted and trend estimates were calculated changed from a Forward Factor methodology to a Concurrent methodology in March quarter 2003. The Forward Factor method relied on an annual analysis of the original time series to estimate seasonal factors that were to be applied in the forthcoming four quarters. Under this method the projected seasonal factors, or forward factors, were not updated until the next annual analysis. The Concurrent methodology uses the most up to date original time series available at each reference period to estimate seasonal factors thus eliminating the need to use projected seasonal factors.

TREND ESTIMATES

25 Smoothing the seasonally adjusted series reduces the impact of the irregular component of the seasonally adjusted series and creates the trend estimates. The trend estimates are derived by applying a 7-term Henderson moving average to the quarterly seasonally adjusted series. The Henderson moving average used in the middle of the time series is symmetric but, as the end of a time series is approached, asymmetric forms of the symmetric moving average are applied. Unlike the weights of the standard 7-term Henderson moving average, the weights used with the quarterly data have been tailored to suit the particular characteristics of individual series.

26 While these techniques enable trend estimates for the latest period to be produced, the process does result in revisions to the trend estimates in recent quarters, particularly as additional original estimates become available. For further information refer to *Information Paper: A Guide to Interpreting Time Series - Monitoring Trends, 2003* (cat. no. 1349.0) available at the ABS web site <www.abs.gov.au>.

CONFIDENTIALISATION OF DATA

27 Under the Census and Statistics Act, when releasing statistics the ABS is required to do this in a manner that is "not likely" (in a legal sense) to enable the identification of a particular person or organisation. A number of techniques are used to do this, including suppression of information. To ensure provider confidentiality in the Survey of Tourist Accommodation, the ABS uses a computerised process known as Disclosure Avoidance Analysis System (DAAS) to confidentialise the entire tourist accommodation dataset each quarter. This process not only ensures that data are suppressed to ensure individual establishments cannot be identified, but also suppresses data in other (consequential) cells to ensure data cannot be derived through deduction from the information available.

28 While the scope and coverage of the Survey of Tourist Accommodation has been expanded, priority has been given to maintaining the integrity and continuity of the core collection (hotels, motels and guest houses, and serviced apartments with 15 or more rooms). In order to maximise data released from the core collection series and the new components of the expanded scope collection (hotels, motels and guest houses, and serviced apartments with 5-14 rooms), the 'total' series (5 or more rooms) has been used for any consequential confidentiality required where possible.

29 The DAAS process begins by confidentialising at the Statistical Local Area (SLA) level, then across Tourism regions, then at the state level and finally the national level. If there is an SLA that has been made confidential then another SLA will have to be made confidential within that Tourism region to protect the confidentiality of the providers in the SLA that was originally made confidential. Depending on the number of SLAs in the Tourism region the whole Tourism region may need to be made confidential. As a

EXPLANATORY NOTES *continued*

CONFIDENTIALISATION OF DATA *continued*

consequence of this, then at least one more Tourism region within a state or territory will also be confidentialised. This may also occur at the state/territory level.

USER AGGREGATION OF DATA

30 The aggregation of data by users across time periods should be undertaken with caution, due to the possibility of non-inclusion of confidentialised data (see the above section for more information re confidentialisation). Where one or more cells contributing to a total have been confidentialised (ie, contains the value of n.p.), the resulting aggregated total will be incorrect. However, some broader levels of data may not be affected by confidentialised cells.

31 Where data can be aggregated (ie, no confidentialised cells are included) for calendar and financial year/s purposes, Establishments, Rooms, Persons employed and Bed spaces data items should not be aggregated. For these items it is recommended that for calendar years, the value of the December quarter is used, and for financial years, the value of the June quarter is used.

32 Any data items that have been derived from other items collected in the survey cannot be aggregated (ie, all those with labels ending in 'rate' or commencing with 'average'). These items must be re-derived based on the aggregation of each of the quarterly items collected in the survey used to derive the rate or average (see Glossary for formulas).

33 Users are cautioned against deriving any non-standard aggregations (eg, aggregation of selected star gradings such as 4-star and 5-star; aggregation of selected geographical areas such as capital city areas and balance of state; aggregation of selected activities such as hotels and motels combined). This is because data are confidentialised based on the standard data item structure.

EFFECTS OF ROUNDING

34 Where figures have been rounded, discrepancies may occur between totals and the sum of the component items.

RELATED PUBLICATIONS

35 Other ABS publications and products which may be of interest are outlined below. Please note, older publications may no longer be available through ABS bookshops but are available through ABS libraries. All publications released from 1998 onwards are available on the ABS web site <www.abs.gov.au>.

Tourist Accommodation, Small Area Data (cat. no. 8635.0.55.002) (data cube for Australia – issued quarterly)

Tourist Accommodation, Small Area Data (cat. no. 8635.1.55.001–8635.8.55.001) (data cubes for each state/territory – issued quarterly)

Tourism Region Maps and Concordance Files, Australia (cat. no. 9503.0.55.001) (annual)

Tourist Accommodation, Australia, Expanded Scope Collection (cat. no. 8635.0.55.001) (irregular)

Short-term Visitor Arrivals Estimates, Australia (cat. no. 3401.0.55.001) (issued monthly)

Overseas Arrivals and Departures, Australia (cat. no. 3401.0) (issued monthly)

Australian National Accounts, Tourism Satellite Account (cat. no. 5249.0) (annual)

Directory of Tourism Statistics, 2001 (cat. no. 1130.0) (irregular)

36 Current publications and other products released by the ABS are listed in the *Catalogue of Publications and Products* (cat. no. 1101.0). The catalogue is available from any ABS office or the ABS web site <www.abs.gov.au>. The ABS also issues a daily Release Advice on the web site which details products to be released in the week ahead.

ABS DATA AVAILABLE ON REQUEST

37 As well as the statistics included in this publication, the ABS has other relevant data available on request. Inquiries should be made to the National Information and Referral Service on 1300 135 070.

GLOSSARY

Average length of stay	<p>Average number of days each guest stayed during the reference period. It is a derived item calculated by dividing the number of guest nights occupied by the number of guest arrivals with the result expressed as a number of days,</p> $\text{Average length of stay(days)} = \frac{\text{Guest nights occupied}}{\text{Guest arrivals}}$
Average takings per available room night	<p>The takings from accommodation divided by the total number of room nights available for the survey period,</p> $\text{Average takings per available room night(\$)} = \frac{\text{Takings from accommodation}}{\text{Room nights available}}$
Average takings per room night occupied	<p>The takings from accommodation divided by the total number of room nights occupied for the survey period,</p> $\text{Average takings per room night occupied(\$)} = \frac{\text{Takings from accommodation}}{\text{Room nights occupied}}$
Bed occupancy rate	<p>The bed occupancy rate represents bed occupancy expressed as a percentage of total capacity available during the survey period,</p> $\text{Bed occupancy rate (\%)} = \frac{\text{Guest nights occupied}}{\text{Guest nights available}} * 100$
Bed spaces	<p>The maximum number of bed spaces normally in place available to accommodate paying guests during the survey period. Three-quarter beds are counted as one bed space; double beds as two bed spaces. Cots and divans not normally used as beds are excluded.</p>
Cabins, flats, units and villas	<p>The maximum number of cabins, flats, units and villas available at caravan parks for accommodating paying guests during the survey period.</p>
Capacity	<p>Capacity in terms of rooms/units/apartments/suites, visitor hostel bed spaces, holiday flats/units/houses or caravan park sites is the maximum number available to accommodate paying guests on the last day of the survey period. Capacity closed temporarily for seasonal reasons is included.</p>
Caravan park sites	<p>The measure of total caravan park capacity available for accommodating paying guests during the survey period. Includes on-site vans, other powered sites, unpowered sites and cabins, flats, units and villas.</p>
Caravan parks	<p>Establishments with 40 or more powered sites and cabins, flats, units and villas which provide either short-term or long-term accommodation to the general public and which provide powered sites for caravans and toilet, shower and laundry facilities for guests.</p>
Caravan parks, long-term	<p>Caravan parks where the majority of paying guests occupied sites for periods of two months or more.</p>
Caravan parks, short-term	<p>Caravan parks where the majority of paying guests occupied sites for periods of less than two months.</p>
Establishments	<p>The number of licensed hotels and resorts, motels and guest houses, serviced apartments, caravan parks and visitor hostels within the scope of the survey which operated for any part of the survey period, or which closed temporarily for the quarter for seasonal reasons.</p>
Guest arrivals	<p>The total number of paying guests counted only on the first night they stayed at the accommodation establishment during the survey period.</p> <p>For holiday flats, units and houses this is the same as unit lettings.</p> <p>This data item is not collected for caravan parks.</p>
Guest nights available	<p>The total number of nights available to all paying guests during the survey period.</p> <p>This is derived from the number of bed spaces multiplied by the number of days for which they were available during the survey period. For establishments closing (other than for seasonal reasons) or opening during this period, operating periods only are included.</p>

GLOSSARY *continued*

Guest nights occupied	The total number of paying guests counted on each night they stayed at the accommodation establishment during the survey period.
Holiday flats, units and houses	The total number of holiday flats, units and houses (excluding establishments predominantly operated on a time-share basis) operated by letting entities (i.e. owners, managers or real estate agents) who have sole letting rights to at least 15 flats, units or houses for short-term letting. These flats, units or houses should be mainly self-contained in terms of cooking, bath (or shower) and toilet facilities and should not have breakfast available for guests. Data for holiday flats, units or houses include short-term owner operators as well as paying guest accommodation.
Hotels	See licensed hotels and resorts with facilities.
Letting entities	For holiday flats, units and houses, the number of owners, managers or real estate agents within the scope of the survey who operated for any part of the survey period.
Licensed hotels and resorts with facilities	Establishments with five or more rooms which are licensed to operate a public bar and which provide accommodation on a room/suite basis, with a bath/shower and toilet in most guest rooms, but which do not have full cooking facilities (i.e. hot plates and oven/microwave) in most guest rooms.
Motels, private hotels and guest houses with facilities	Establishments with five or more rooms which are not licensed to operate a public bar, and which provide accommodation on a room/suite basis, with a bath/shower and toilet in most guest rooms, but which do not have full cooking facilities (i.e. hot plates and oven/microwave) in most guest rooms.
Multiple bedroom holiday flats, units and houses	The total number of holiday flats, units and houses available with multiple bedrooms.
Occupancy	<p>Occupancy in terms of room nights, unit nights or site nights occupied refers to the total number of nights each room, unit or caravan park was occupied during the survey period.</p> <p>Occupancy in terms of guest nights refers to the total number of paying guests counted on each night they stayed at the accommodation establishment during the survey period.</p>
On-site vans	The maximum number of vans owned or leased by the establishment for the purpose of providing accommodation to the general public.
Other powered sites	The maximum number of sites with provision for connection to electric power supply, available at caravan parks for accommodating paying guests during the survey period, excluding powered sites occupied by on-site vans, and cabins, flats, units and villas.
Other sites permanently reserved	The total number of powered and unpowered sites, on-site vans and cabins, flats, units and villas continuously let for two months or more on the last day of the survey period to tenants who occupy the sites only on a casual or sporadic basis.
Persons employed	The total number of persons working at each accommodation establishment at the end of the survey period (including working proprietors and those working on other than accommodation activities). This data item is not applicable to holiday flats, units and houses let by real estate agents.
Room nights available	The number of rooms/units available multiplied by the number of days for which they were available during the survey period. For establishments closing (other than for seasonal reasons) or opening during this period, operating periods only are included.
Room nights occupied	The number of nights each guest room/unit was occupied by a paying guest during the survey period.
Room occupancy rate	<p>The room occupancy rate represents room occupancy expressed as a percentage of total capacity available during the survey period,</p> $\text{Room occupancy rate (\%)} = \frac{\text{Room nights occupied}}{\text{Room nights available}} * 100$

GLOSSARY *continued*

Room occupancy rate <i>continued</i>	providing that, for establishments closing (other than for seasonal reasons) or opening during the survey period, the denominator of the above expression includes only operating periods.
Rooms	The maximum number of rooms available for accommodating short-term paying guests at each licensed hotel and resort, motel and guest house and serviced apartment during the survey period. Units, apartments and suites are treated as rooms for these types of establishments in these survey results.
Serviced apartments	Establishments with five or more units which mostly comprise self-contained units at the same location, and which are available on a unit/apartment basis to the general public for a minimum of one night. The units should have full cooking facilities (i.e. hot plates and oven/microwave), refrigerator and bath/shower and toilet facilities; all bed linen and towels should be provided, and daily servicing (i.e. cleaning and bed making) must be available through the on-site management, although this service may not necessarily be used.
Single bedroom holiday flats, units and houses	The total number of holiday flats, units and houses available with a single bedroom.
Site nights available	The number of caravan park sites available multiplied by the number of days for which they were available during the survey period. For establishments closing (other than for seasonal reasons) or opening during this period, operating periods only are included.
Site nights occupied	The total number of nights each caravan park site was occupied during the survey period.
Site occupancy rate	<p>The site occupancy rate for caravan parks represents site occupancy expressed as a percentage of total capacity available during the survey period,</p> $\text{Site occupancy rate (\%)} = \frac{\text{Site nights occupied}}{\text{Site nights available}} * 100$ <p>providing that, for establishments closing (other than for seasonal reasons) or opening during the survey period, the denominator of the above expression includes only operating periods.</p>
Sites occupied by long-term guests	The total number of caravan park sites occupied on the last day at the end of the survey period by guests who have stayed continuously for two months or more.
Star grading	<p>The grading of hotels, motels and guest houses with facilities and serviced apartments is based on the classification system owned by AAA Tourism Pty Ltd. The gradings are allocated according to a points system based on the amenities and facilities available to guests. Details of the grading scheme are contained in the publication <i>Accommodation Guide</i> published by AAA Tourism Pty Ltd for each of the individual Australian Motoring Organisations. For the purpose of classifying establishments to a star grading in this publication, 'half' star gradings are ignored (e.g. a two and a half star grading has been shown as two star).</p> <p>While coverage has significantly improved, some establishments (including some competing in the four and five star markets and having significant takings) still remain outside the star grading scheme. These establishments have been given a star grading of 'ungraded'.</p>
Takings from accommodation	<p>Since 1 July 2000, takings from accommodation include gross revenue from the provision of accommodation, including GST. Takings from meals are excluded. In cases where takings from accommodation data cannot be provided inclusive of GST the amount of GST payable is estimated and the data revised accordingly.</p> <p>Takings from accommodation for each month generally represent the takings received during that month. Where payments are received in advance of, or after the provision of accommodation to guests, the monthly figure for takings from accommodation may not necessarily bear a direct relationship to the number of guests accommodated during the month.</p>

GLOSSARY *continued*

Unit lettings	The total number of times a holiday flat, unit or house was occupied by a new tenant, counted only on the first night it was occupied by the new tenant. This is the equivalent of guest arrivals.
Unit nights available	The number of holiday flats, units and houses available multiplied by the number of days for which they were available during the survey period. For establishments closing (other than for seasonal reasons) or opening during this period, operating periods only are included.
Unit nights occupied	The total number of nights each holiday flat, unit or house was occupied during the survey period.
Unit occupancy rate	<p>The unit occupancy rate for holiday flats, units and houses represents unit occupancy expressed as a percentage of total capacity available during the survey period,</p> $\text{Unit occupancy rate (\%)} = \frac{\text{Unit nights occupied}}{\text{Unit nights available}} * 100$ <p>providing that, for letting entities closing (other than for seasonal reasons) or opening during the survey period, the denominator of the above expression includes only operating periods.</p>
Unpowered sites	The maximum number of sites with no provision for connection to electric power supply, available at caravan parks for accommodating paying guests during the survey period.
Visitor hostels	Establishments with 25 or more bed spaces which provide accommodation to visitors on a bed basis (rather than by room). This category does not include establishments providing charity type accommodation (e.g. Salvation Army hostels) nor hotels, motels and guest houses without in-room facilities which provide accommodation on a per room basis.

FOR MORE INFORMATION . . .

<i>INTERNET</i>	www.abs.gov.au the ABS web site is the best place for data from our publications and information about the ABS.
<i>LIBRARY</i>	A range of ABS publications are available from public and tertiary libraries Australia wide. Contact your nearest library to determine whether it has the ABS statistics you require, or visit our web site for a list of libraries.

INFORMATION AND REFERRAL SERVICE

Our consultants can help you access the full range of information published by the ABS that is available free of charge from our web site, or purchase a hard copy publication. Information tailored to your needs can also be requested as a 'user pays' service. Specialists are on hand to help you with analytical or methodological advice.

<i>PHONE</i>	1300 135 070
<i>EMAIL</i>	client.services@abs.gov.au
<i>FAX</i>	1300 135 211
<i>POST</i>	Client Services, ABS, GPO Box 796, Sydney NSW 2001

FREE ACCESS TO STATISTICS

All statistics on the ABS web site can be downloaded free of charge.

<i>WEB ADDRESS</i>	www.abs.gov.au
--------------------	-----------------------



2863500009069

ISSN 1031 0770

RRP \$30.00